

THE CORNERSTONE DIFFERENCE.



*Discover Church Square's
most flexible floor plans
from a team exclusively
focused on 55+
homeowners.*



C'MON IN.

Thank you for choosing Cornerstone Homes at Church Square. No other builder spends more time, energy, and resources envisioning new ways to help 55+ homeowners live better, healthier, and more engaged lives. For over 25 years, we have focused exclusively on Active Adults. We look forward to creating an exceptional home and experience for you at Church Square.

TABLE OF CONTENTS

- Meet our President, Frank Lackman 1
- Community Plan 2
- About Church Square 3 & 4
- Floor Plans 5 - 9

BECAUSE YOU WANT SO MUCH MORE THAN A HOUSE.

You have many choices in where to live. So what makes us the right choice for you and your lifestyle? The answer is simple. You and your lifestyle are the very things that inspired this neighborhood.

Church Square is a more personal kind of neighborhood. Just the right size to offer the recreation amenities and sense of community you want, but not so large that you feel like one of the masses.

Cornerstone Homes' buying and construction processes are also highly personalized. You'll enjoy lots of design choices and flexible floorplans so your home feels tailored just for you. And no one works harder than Cornerstone Homes to keep you informed, engaged and excited every step of the way.

Our people have been building great 55+ communities and delighting Active Adult homebuyers in Virginia and North Carolina for over 25 years. We look forward to doing the same for you.



OUR HOMEBUYERS GET MORE THAN JUST A HOUSE. THEY GET A SENSE OF COMMUNITY AND A LIFESTYLE TAILORED TO THEIR UNIQUE NEEDS, PASSIONS AND INTERESTS.

FRANK LACKMAN

President, Cornerstone Homes

CHURCH SQUARE



Award winning, farmhouse style villa and paired homes offering single-level living, with thoughtfully designed large entertaining kitchens, private outdoor spaces, and well-appointed owner's retreats. The low maintenance lifestyle offers you the freedom to enjoy the community pool and clubhouse, local amenities or relax right in the comfort of your own home.



ABOUT SMITHFIELD, VIRGINIA

The Area

Small town charm, beautiful architecture, waterfront living, and the best smoked ham this side of the Atlantic - these are just a few of the reasons to love living in Smithfield, VA! Smithfield is a small town located in Isle of Wight County just about an hour's drive from Williamsburg and Virginia Beach. The town has a rich culture as one of the state's original eight shires, and you can visit historically-significant structures like St. Luke's Church — the nation's oldest existing church building (dating back to 1632) which houses the nation's oldest intact organ.

Today, Smithfield is a thriving town with wonderful local shopping, dining, marinas, parks, and many other places to explore. The community is close-knit and the lifestyle is carefree, creating a perfect balance of idyllic life with everything you need close by.

“One of the prettiest
towns in Virginia.”

The Community

Church Square is perfectly located to take advantage of all the charm and accessibility that Smithfield has to offer. Easily walk to the downtown area with all its shops and restaurants, or stay active on the multiple trails from Church Square to other historical and picturesque parts of town.

The community clubhouse will keep you engaged and active with a sparkling pool and expansive outdoor amenity space. Church Square also takes care of all your exterior home maintenance, so that you have more time and energy to explore all the wonderful things about your neighborhood, town, and beyond.

Like all Cornerstone communities, Church Square will be a close-knit community where neighbors easily become friends. And best of all, gorgeous, brand new homes where you never have to lift a finger again to do yard maintenance.

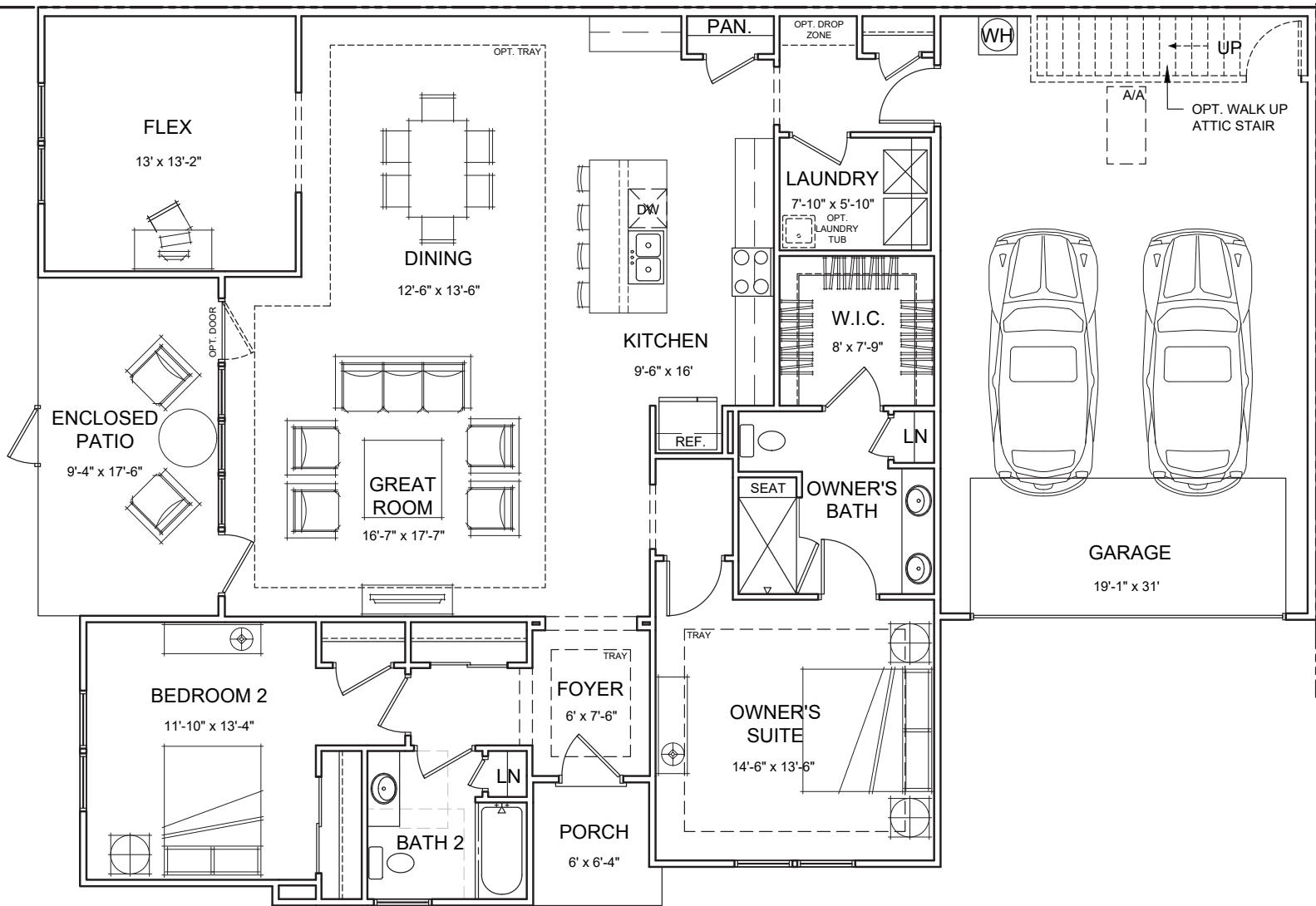


FOLLOW CHURCH SQUARE ON FACEBOOK FOR THE VERY LATEST.



THE AUGUSTA VILLA HOME // 1,898 SQ FT

2 BEDROOMS, 2 BATHS, FLEX SPACE, ENCLOSED PATIO



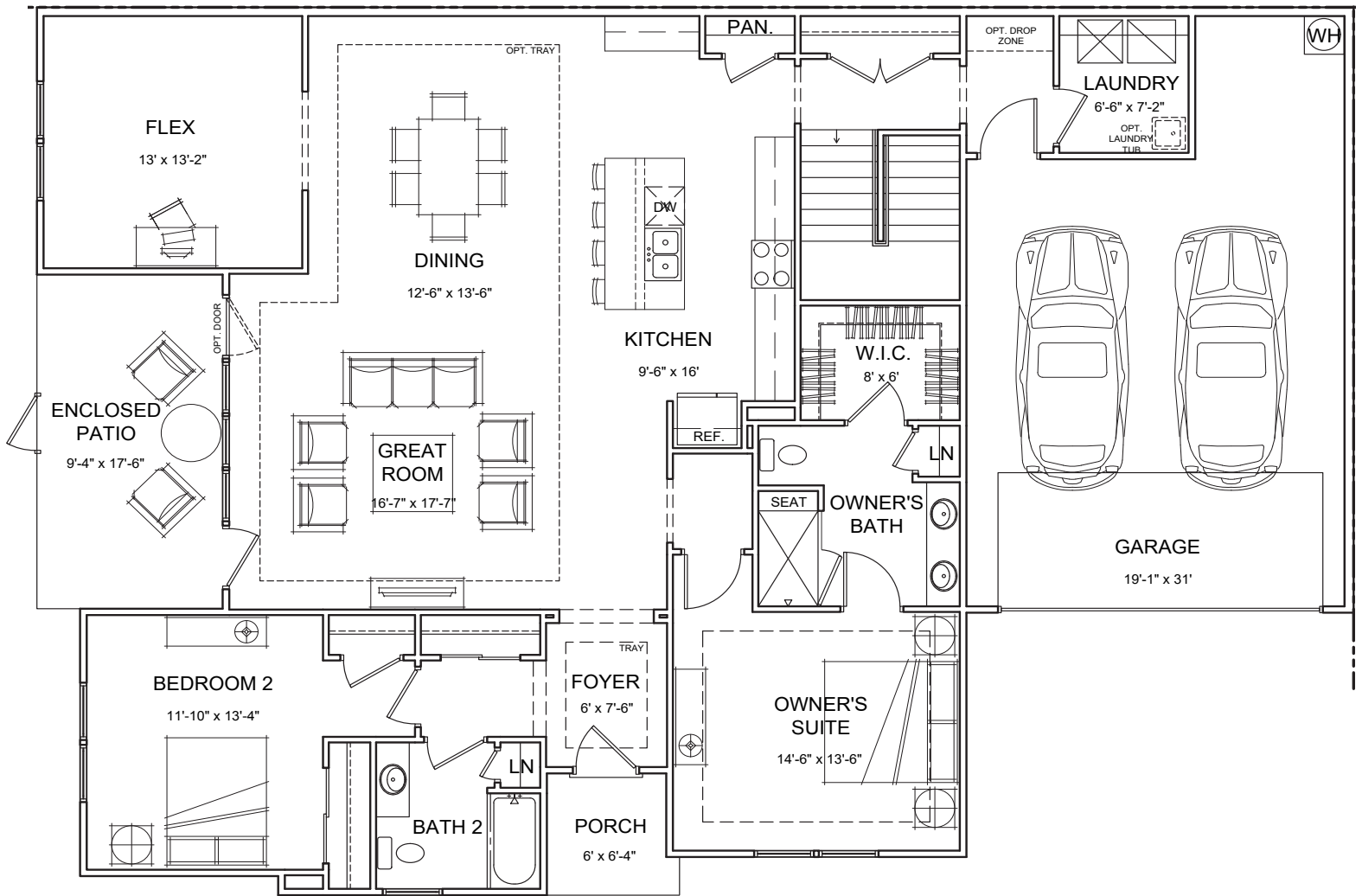
INCLUDED FEATURES

- Open and Spacious Great Room
- Large Entertaining Kitchen
- Flex Room
- Large Side Patio, Covered Front Porch
- Attached Oversized 2-Car Garage



THE AUGUSTA VILLA HOME WITH LOFT // 2,560 SQ FT

3 BEDROOMS, 3 BATHS, FLEX SPACE, ENCLOSED PATIO



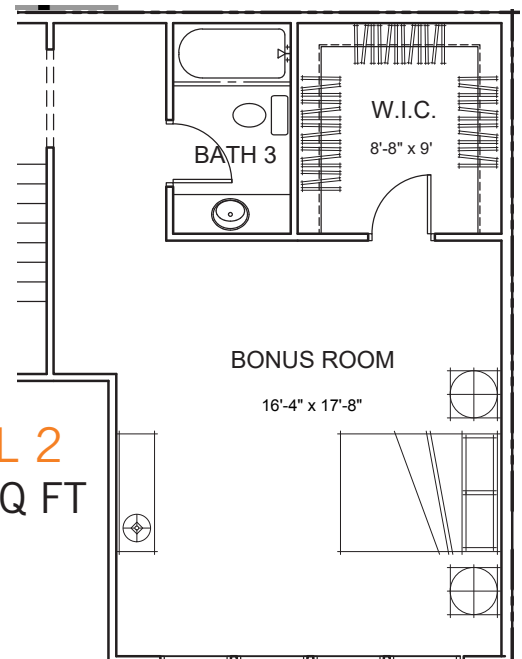
MAIN LEVEL

INCLUDED FEATURES

- Open and Spacious Great Room
- Large Entertaining Kitchen
- Flex Room
- Large Side Patio, Covered Front Porch
- Attached Oversized 2-Car Garage

LEVEL 2

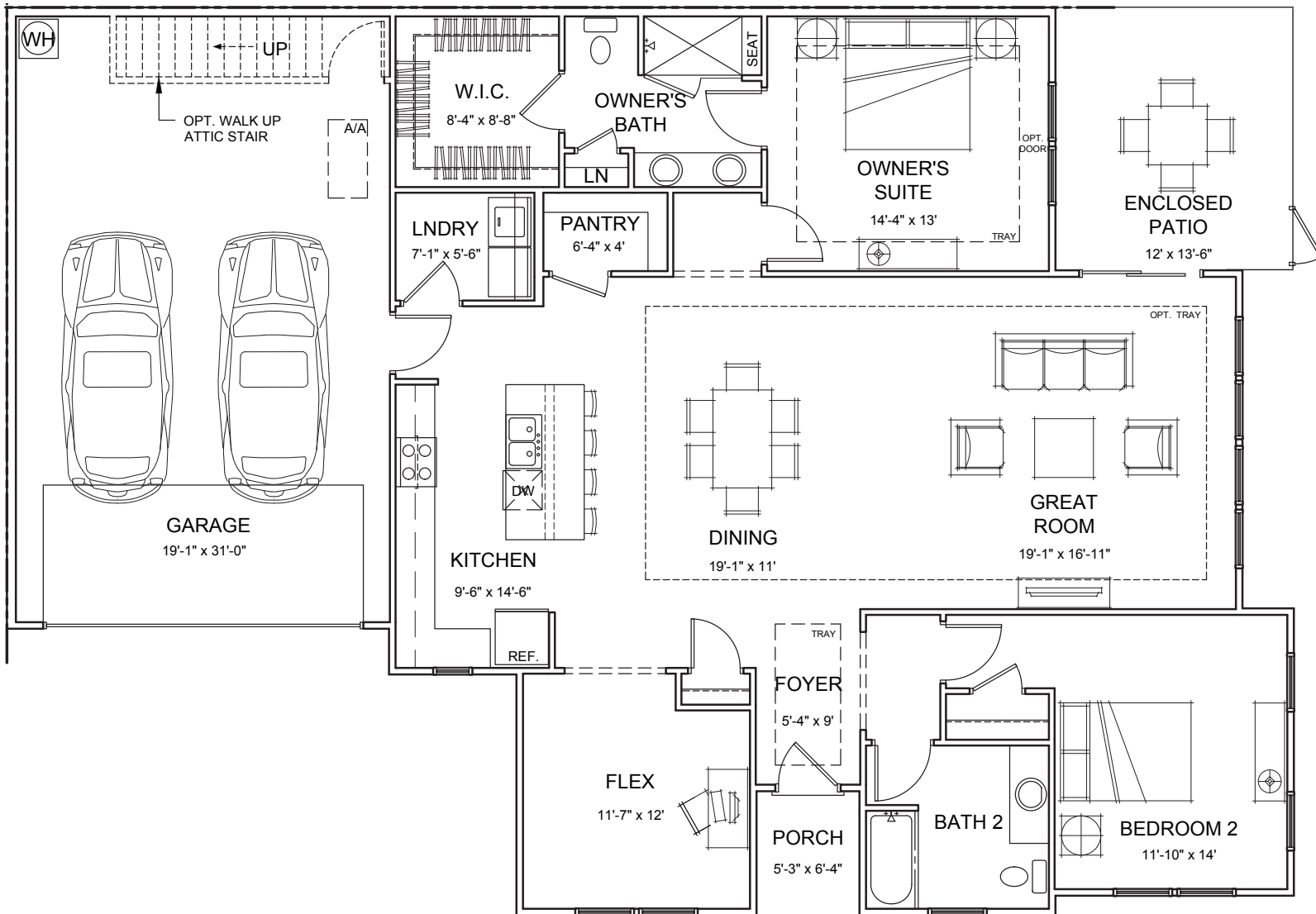
571 SQ FT



6

THE NEWPORT VILLA HOME // 1,805 SQ FT

2 BEDROOMS, 2 BATHS, FLEX SPACE, ENCLOSED PATIO

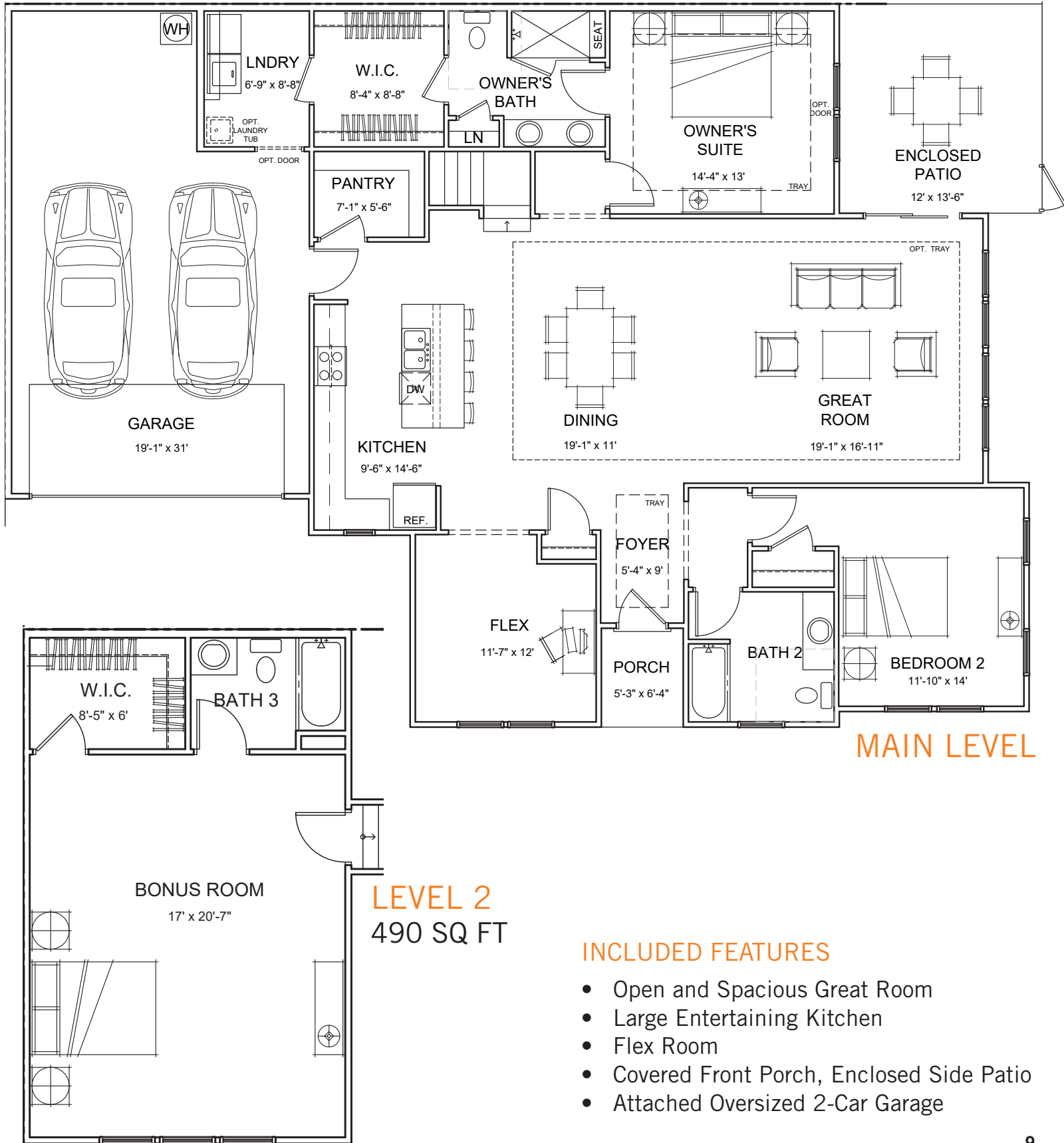


INCLUDED FEATURES

- Open and Spacious Great Room
- Large Entertaining Kitchen
- Flex Room
- Covered Front Porch, Enclosed Side Patio
- Attached Oversized 2-Car Garage

THE NEWPORT VILLA HOME WITH LOFT // 2,362 SQ FT

3 BEDROOMS, 3 BATHS, FLEX SPACE, ENCLOSED PATIO



INCLUDED FEATURES

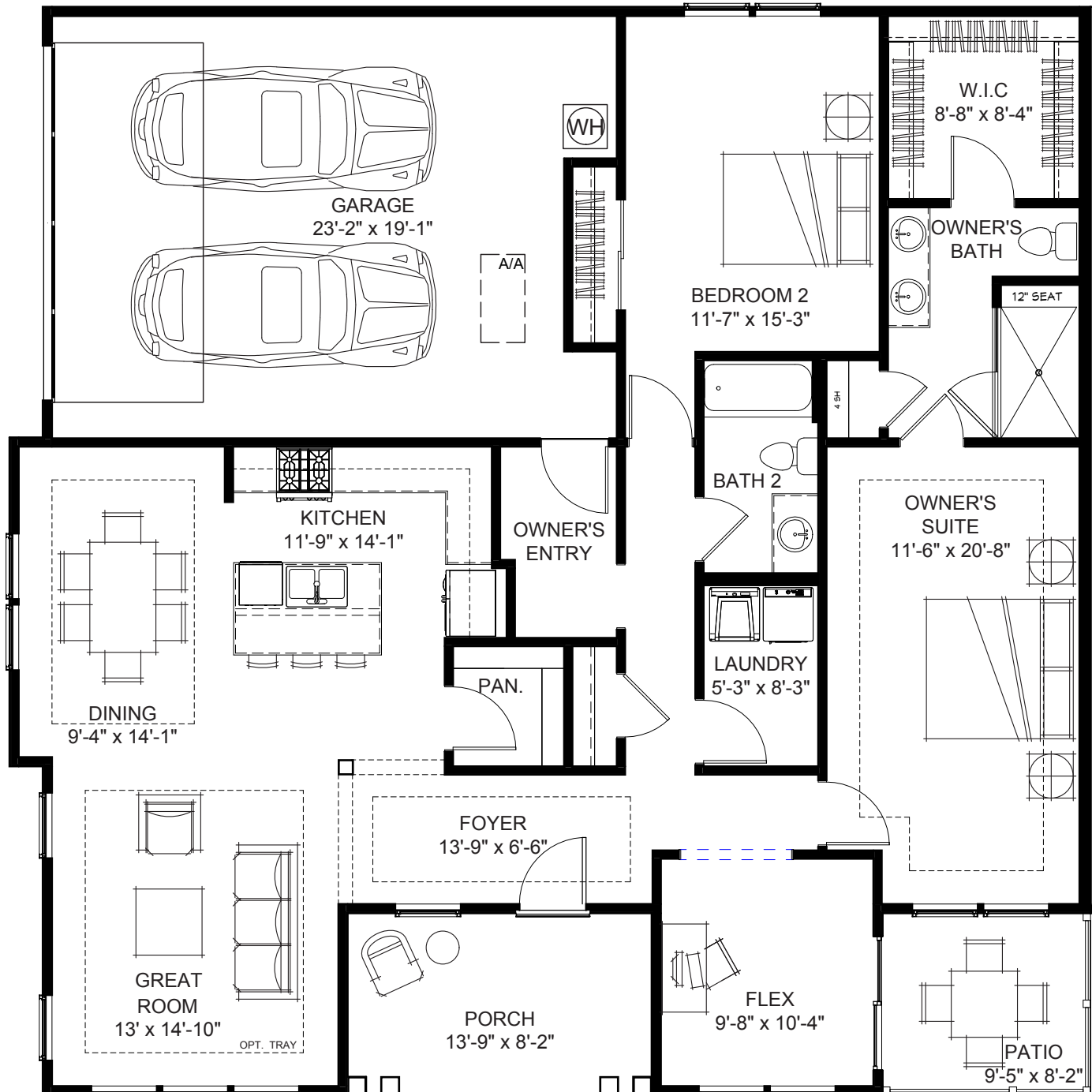
- Open and Spacious Great Room
- Large Entertaining Kitchen
- Flex Room
- Covered Front Porch, Enclosed Side Patio
- Attached Oversized 2-Car Garage

THE WINDSOR VILLA HOME // 1,661 SQ FT

2 BEDROOMS, 2 BATHS, FLEX SPACE, LARGE PORCH

INCLUDED FEATURES

- Open and Generous Great Room
- Spacious Entertaining Kitchen
- Large Front Porch, Enclosed Side Patio
- Attached Oversized 2-Car Garage



7

Church Square Sales

757-280-2046 • CSsales@cornerstonehomes.net

Sales by Appointment Only

ChurchSquare55.com

Smithfield, VA