



## BENT PINE PRESERVE COMMUNITY PRICE LIST

PLAN	BED	BATH	DEN	GARAGE	SF	PRICE
Talbot	3	3	Y	2 BAY	2,532	Call For Pricing
Tavvo	3	3	Y	2 BAY	2,603	Call For Pricing

### INVENTORY HOMES

PLAN	BED	BATH	DEN	GARAGE	SF	PRICE
Talbot 5745 Bent Pine Square, Vero Beach, FL 32967 Lot: 27	3	3	Y	2 BAY	2,532	\$799,990
Tavvo 5697 Bent Pine Square, Vero Beach, FL 32967 Lot: 19	3	3	Y	2 BAY	2,603	\$820,900

Contact your salesperson for specific lot information.

To learn more about these homes, please contact  
Nicole Morris at 772.257.1100 or e-mail [nicolem@ghohomes.com](mailto:nicolem@ghohomes.com)





# BENT PINE PRESERVE

## COMMUNITY PROFILE

### COMMUNITY OVERVIEW

Bent Pine Preserve is a picturesque intimate new home community with 134 homes located in the highly desirable area of Vero Beach, Florida. This gated community offers a serene environment with amenities such as a 24/7 manned security gate and community park. Residents can also enjoy the luxury amenities provided by Bent Pine's clubhouse membership, which includes access to the private Bent Pine Golf Club. Conveniently located near shopping centers, beaches, and airports, making this community an ideal place for those seeking a blend of tranquility and accessibility.

Two new construction homes are available in Bent Pine Preserve, each with 3 bedrooms with 3 baths and offer an open concept of living area plus a den and 2-car garages.

#### Community Location:

5730 Palmetto Preserve Rd, Vero Beach, FL, 32967

#### Driving Directions:

From I95, take exit 147 for 20th St./SR 60 and head East. Turn left onto 58th Avenue. Head towards 57th St. Turn right onto Bent Pine Drive. Take the first left onto Palmetto Preserve Rd. The sales office is on the right.

From US1, turn onto SR 60 and head West. Turn right onto 58th Avenue and head towards 57th St. Turn right onto Bent Pine Drive. Take the first left onto Palmetto Preserve Rd. The sales office is on the right.

#### Total Number of Homes:

134 homes

#### Community Dues/Fees:

HOA \$250 per month.

One-Time Fees: \$350 Mail Kiosk Fee and \$650 Capital Contribution Fee due at closing.

#### Elementary School:

For questions about additional school options, please contact the IRC School Board about their Parent's Choice program 772.564.3000. These are the closest schools to the community: North County Elementary School 6640 Old Dixie Hwy, Vero Beach, FL 32967 (2.8 miles) (772) 794-1941 Dodgertown Elementary School 4350 43rd Ave, Vero Beach, FL 32967 (3 miles) (772) 564-4100

#### Middle School:

Storm Grove Middle School 6400 57th St, Vero Beach, FL 32967 (0.8 miles) (772) 564-6400 Gifford Middle School 4530 28th Ct, Vero Beach, FL 32967 (3.6 miles) (772) 564-3550

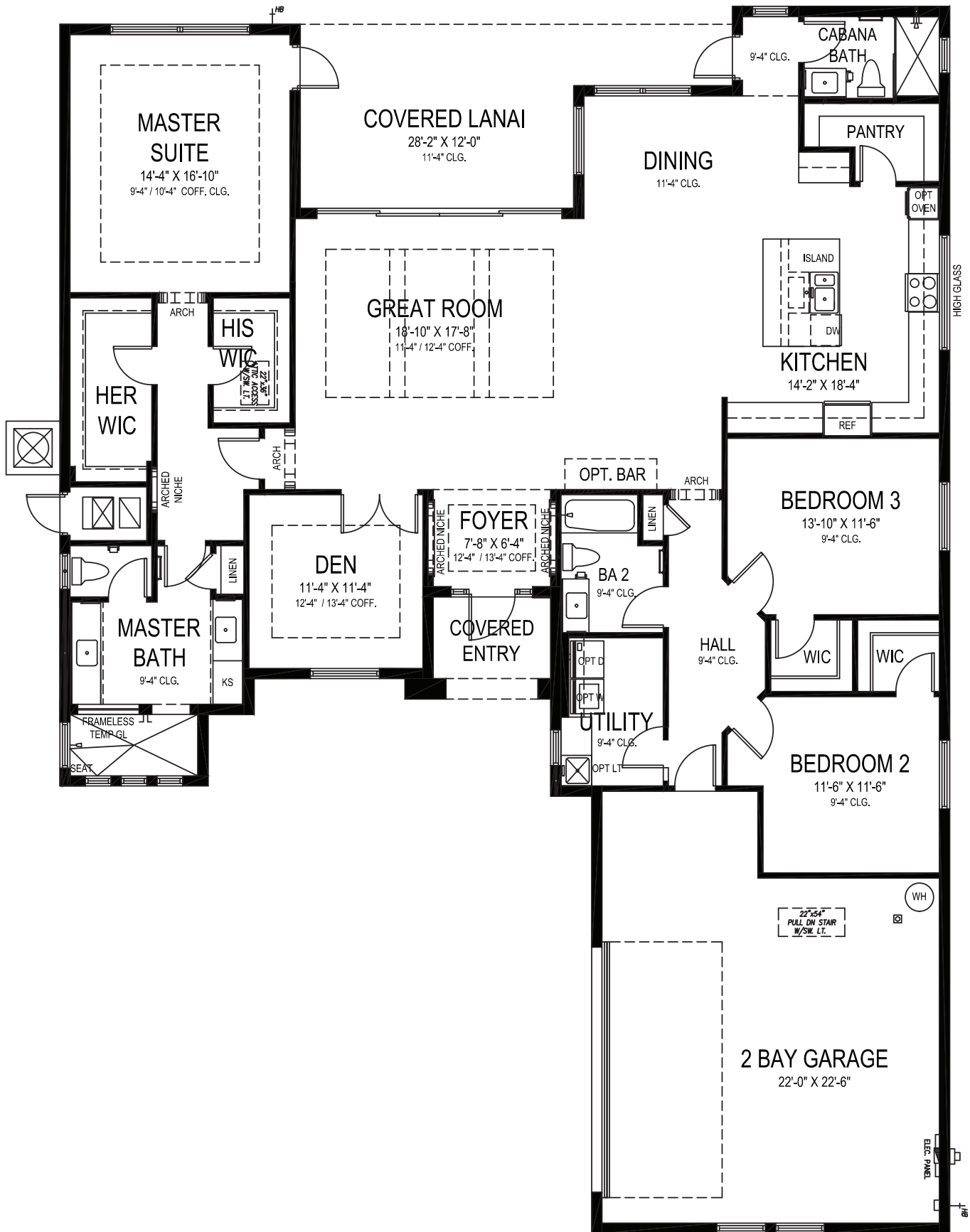
#### High School:

Vero Beach High School 1707 16th St, Vero Beach, FL 32960 (7.5 miles) 772) 564-5600

#### Amenities:

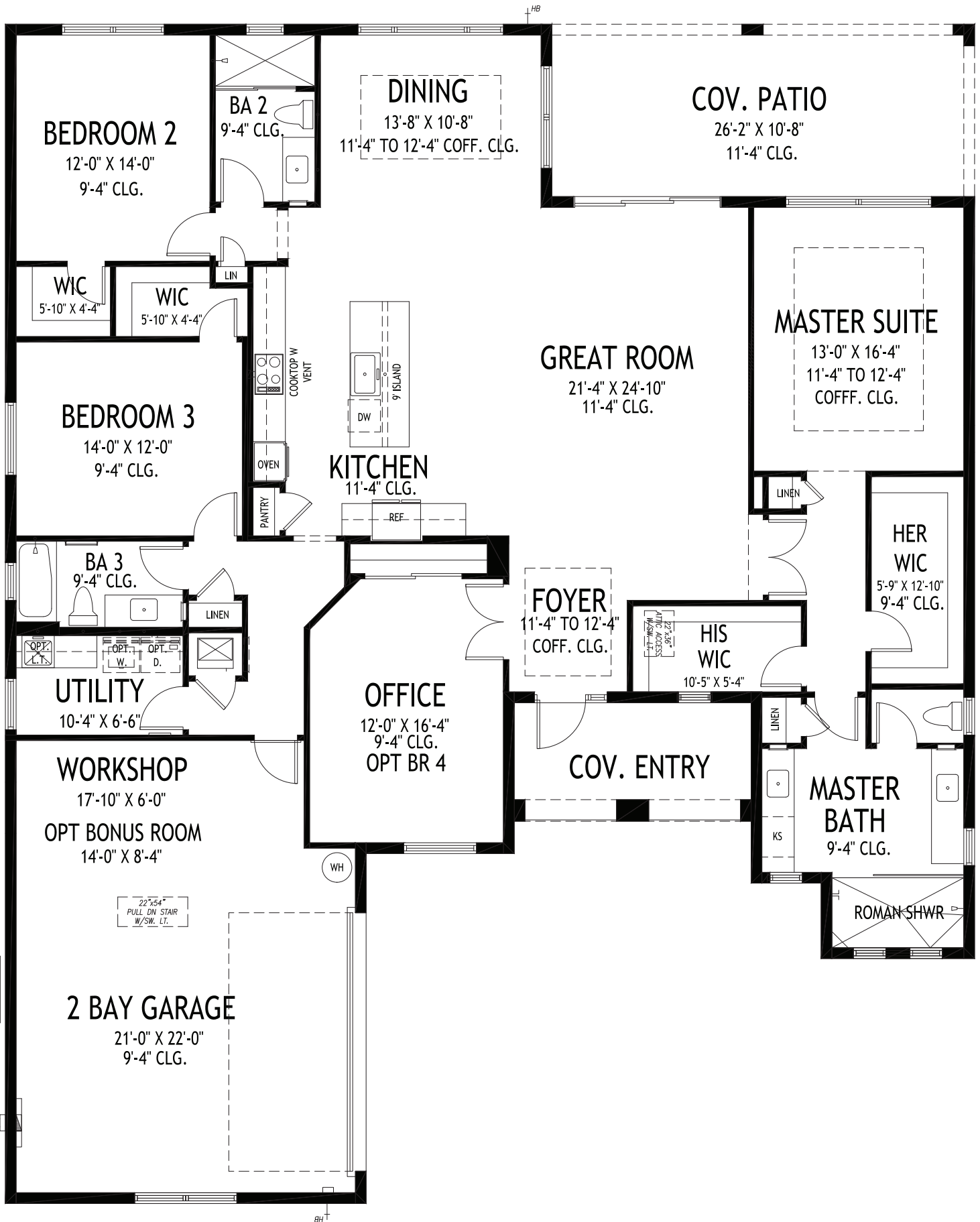
Manned Security Gate at entry, street lighting, ganged mailboxes, common area maintenance, wall maintenance.





**TALBOT**

3 BEDS • DEN • 3 BATHS • 2+ BAY GARAGE • 58' x 80' • 3,443 SF  
A/C: 2,532 sf • covered entry: 54 sf • covered patio: 255 sf • garage: 602 sf



**GHO HOMES**

A GREEN BRICK PARTNER

**TAVVO**

3 BEDS • DEN • 3 BATHS • 2+ BAY GARAGE • 60' x 73' • 3,605 SF  
A/C: 2,603 sf • covered entry: 108 sf • covered patio: 279 sf • garage: 615 sf

All dimensions, features, specifications and square footages are approximate and subject to change without notice. Maps, plans, landscaping and elevation renderings are artist's conceptions, are not to scale, and may not accurately depict the homes or lots as they are built. © GHO Homes 2019. Revised February 7, 2023.



772.257.1100 • GHOHOMES.COM

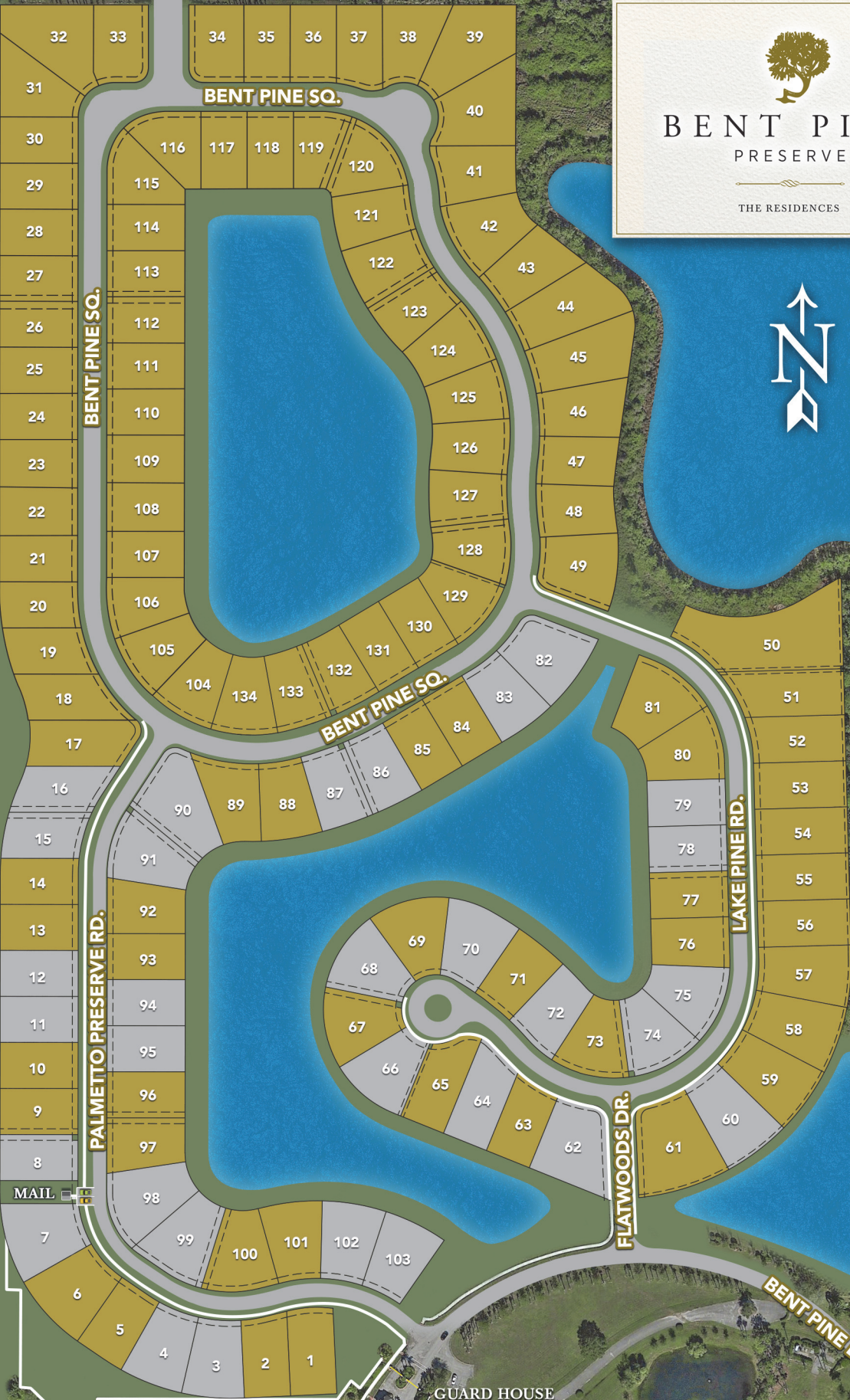
61ST STREET

58TH AVE • KINGS HWY

58TH AVE • KINGS HWY



**BENT PINE**  
PRESERVE  
— — — — —  
THE RESIDENCES



MAIL

GUARD HOUSE & GATED ENTRY

BENT PINE DR.

56TH PLACE

BENT PINE DR.

BENT PINE SQ.

BENT PINE SQ.

PALMETTO PRESERVE RD.

FLATWOODS DR.

LAKE PINE RD.