



## SEAGLASS COMMUNITY PRICE LIST

### ISLAND SERIES FLOORPLANS

PLAN	BED	BATH	DEN	GARAGE	SF	PRICE
Seabreeze Grande	3	3	N	2 BAY	2,254	\$1,298,990
Azure	3	3	Y	2 BAY	2,551	\$1,823,990
Cerulean Grande	3	3.5	N	3 BAY	2,413	\$1,824,990
Indigo	3	3	Y	3 BAY	2,611	\$1,840,990
Sapphire	3	3	Y	2 BAY	2,629	\$1,866,990
Viridian	3	3	N	3 BAY	2,657	\$1,870,990
Indigo Grande	3	3	Y	3 BAY	2,720	\$1,883,990
Indigo Grande 4	4	3	N	3 BAY	2,720	\$1,885,990
Citron 25	3	3.5	Y	3 BAY	2,990	\$1,986,990

### LAKE SIDE SERIES FLOORPLANS

PLAN	BED	BATH	DEN	GARAGE	SF	PRICE
Seabreeze Grande	3	3	N	2 BAY	2,254	\$1,463,990
Azure	3	3	Y	2 BAY	2,551	\$1,933,990
Cerulean Grande	3	3.5	N	3 BAY	2,413	\$1,934,990
Indigo	3	3	Y	3 BAY	2,611	\$1,950,990
Viridian	3	3	N	3 BAY	2,657	\$1,970,990
Sapphire	3	3	Y	2 BAY	2,629	\$1,976,990
Indigo Grande	3	3	Y	3 BAY	2,720	\$1,983,840
Indigo Grande 4	4	3	N	3 BAY	2,720	\$1,985,990
Citron 25	3	3.5	Y	3 BAY	2,990	\$2,086,990

### INVENTORY HOMES

PLAN	BED	BATH	DEN	GARAGE	SF	PRICE
Sapphire Grande 15 9193 Seaglass Court, Vero Beach, FL 32963 Lot: 15	3	4	N	3 BAY	2,928	\$2,362,000
Seabreeze Grande 1960 Frosted Turquoise Way, Vero Beach, FL 32963 Lot: 64	3	3	N	2 BAY	2,254	\$1,512,000
Indigo Grande 9241 Seaglass Court, Vero Beach, FL 32963 Lot: 8	3	3	Y	3 BAY	2,720	\$2,170,000
Citron 25 9235 Seaglass Court, Vero Beach, FL 32963 Lot: 9	3	3.5	Y	3 BAY	2,990	\$2,208,000



Seller reserves the right to make changes or modifications to plans, maps, plan specifications, materials, Features, and colors without notice. Prices are subject to change without notice. Maps, plans, landscaping and elevation renderings are artist's conceptions, not to scale, and may not accurately depict the homes or lots as they are built. This brochure is for illustrative purposes only and not a part of a legal contract. Lic. #CBC051145



## SEAGLASS COMMUNITY PRICE LIST

Cerulean Grande 9108 Seaglass Court, Vero Beach, FL 32963 Lot: 30	3	3.5	Y	2 BAY	2,611	\$2,206,000
Citron 9160 Seaglass Court, Vero Beach, FL 32963 Lot: 38	3	3.5	Y	3 BAY	2,954	\$2,470,000

All base prices above include a standard homesite in Seaglass as well as a standard pool and screen enclosure. See the community features for specific details. The Seabreeze Grande is an attached villa home. See the site plan for designated villa homesites. Not all plans are designed to fit on every homesite. Contact your salesperson for specific lot information.

To learn more about these homes, please contact  
Lisa Krynski at 772.257.1100 or e-mail [lisak@ghohomes.com](mailto:lisak@ghohomes.com)



Seller reserves the right to make changes or modifications to plans, maps, plan specifications, materials, Features, and colors without notice. Prices are subject to change without notice. Maps, plans, landscaping and elevation renderings are artist's conceptions, not to scale, and may not accurately depict the homes or lots as they are built. This brochure is for illustrative purposes only and not a part of a legal contract. Lic. #CBC051145



## SEAGLASS COMMUNITY PROFILE

### COMMUNITY OVERVIEW

Seaglass in Vero Beach, Florida is an exclusive new home community that offers an unparalleled living experience. Designed to harmonize with its natural surroundings, this community is a preserved beauty, featuring majestic giant oak trees, serene trails and charming boardwalks. Meandering pathways weave throughout the neighborhood, placing nature at the heart of the design and creating a tranquil retreat for residents.

Directly across from the community, residents enjoy privileged access to a private, resident-only Beach Club. This exclusive amenity offers direct beach access, allowing homeowners to fully immerse themselves in the coastal lifestyle. The clubhouse is designed with a fitness center, a community room complete with game tables and inviting outdoor seating areas. For those who love the sand and surf, beach chairs are readily available, making every day a beach day.

The homes at Seaglass are a testament to refined living, offering a range of villa and single-family designs with high-end finishes and meticulous attention to detail. Floor plans feature 3 to 4 bedrooms, many with optional dens, 3 to 3.5 baths, and spacious 2- or 3-car garages. With air-conditioned living spaces ranging from just over 2,250 sq. ft. to nearly 2,950 sq. ft., these homes are as spacious as they are luxurious.

Every home in Seaglass comes with a private pool as a standard feature, elevating the outdoor living experience. Buyers can further customize their homes through the Tailor Made Program and Design Studio, with options such as master bath enhancements, hobby rooms, and more. This ensures each home is as unique as its owner, blending luxury with functionality to create the perfect coastal retreat.

Seaglass is more than a community, it's a lifestyle. With its seamless integration of natural beauty, thoughtfully curated amenities, and luxurious homes, it offers a living experience that is truly second to none. Located in the heart of Vero Beach, residents enjoy the perfect balance of coastal charm and modern convenience, making Seaglass the ultimate destination for those seeking a life of elegance and tranquility.

#### Driving Directions:

From the Island:

Head north on A1A to the corner of Wabasso Causeway and A1A. Turn left on Wabasso Causeway and the entrance to Seaglass will be on the left.

From Vero:

Take US1 north to Wabasso Causeway - cross the Wabasso and just east of A1A - turn into the community on your right.

From I95 from the South:

Exit in Vero Beach on SR 60 headed east to 66th Avenue. Turn left. Continue to CR510. Head East (Right), cross over US1 and the road changes names to Wabasso Causeway. Cross the Wabasso and just east of A1A - turn into the community on your right.

From I95 from the North:

Exit in Sebastian on CR512. Continue East to CR 510. Turn right. Head East (Right), cross over US1 and the road changes names to Wabasso Causeway. Cross the Wabasso and just east of A1A - turn into the community on your right.

#### Total Number of Homes:

72 homesites

#### Community Dues/Fees:

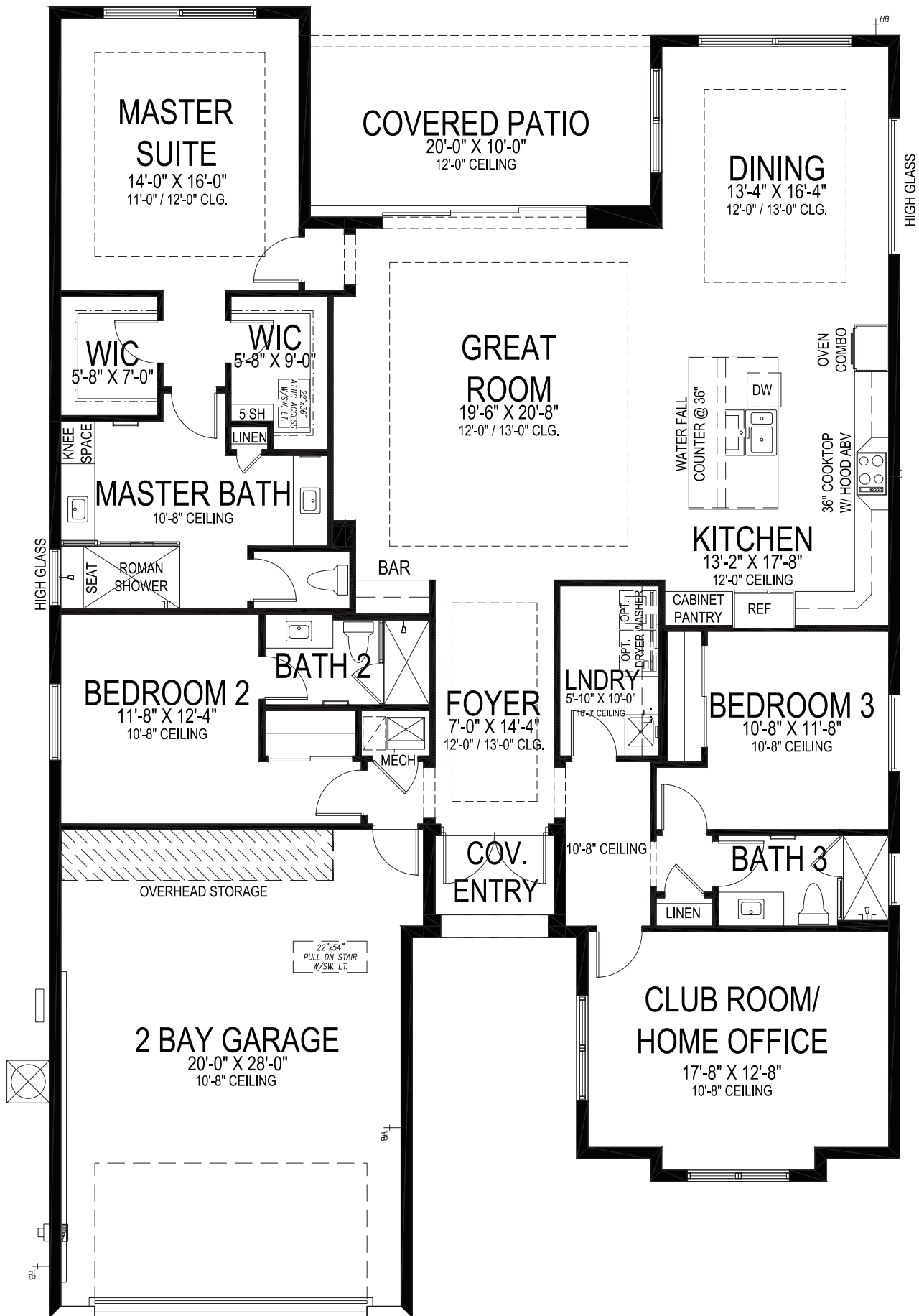
Approved 2026 HOA Fees: \$612 per month

Capital Contribution to HOA: \$2,000

Beach Club Fee: \$10,000



Seller reserves the right to make changes or modifications to plans, maps, plan specifications, materials, Features, and colors without notice. Prices are subject to change without notice. Maps, plans, landscaping and elevation renderings are artist's conceptions, not to scale, and may not accurately depict the homes or lots as they are built. This brochure is for illustrative purposes only and not a part of a legal contract. Lic. #CBC051145



# GHO HOMES

A GREEN BRICK PARTNER

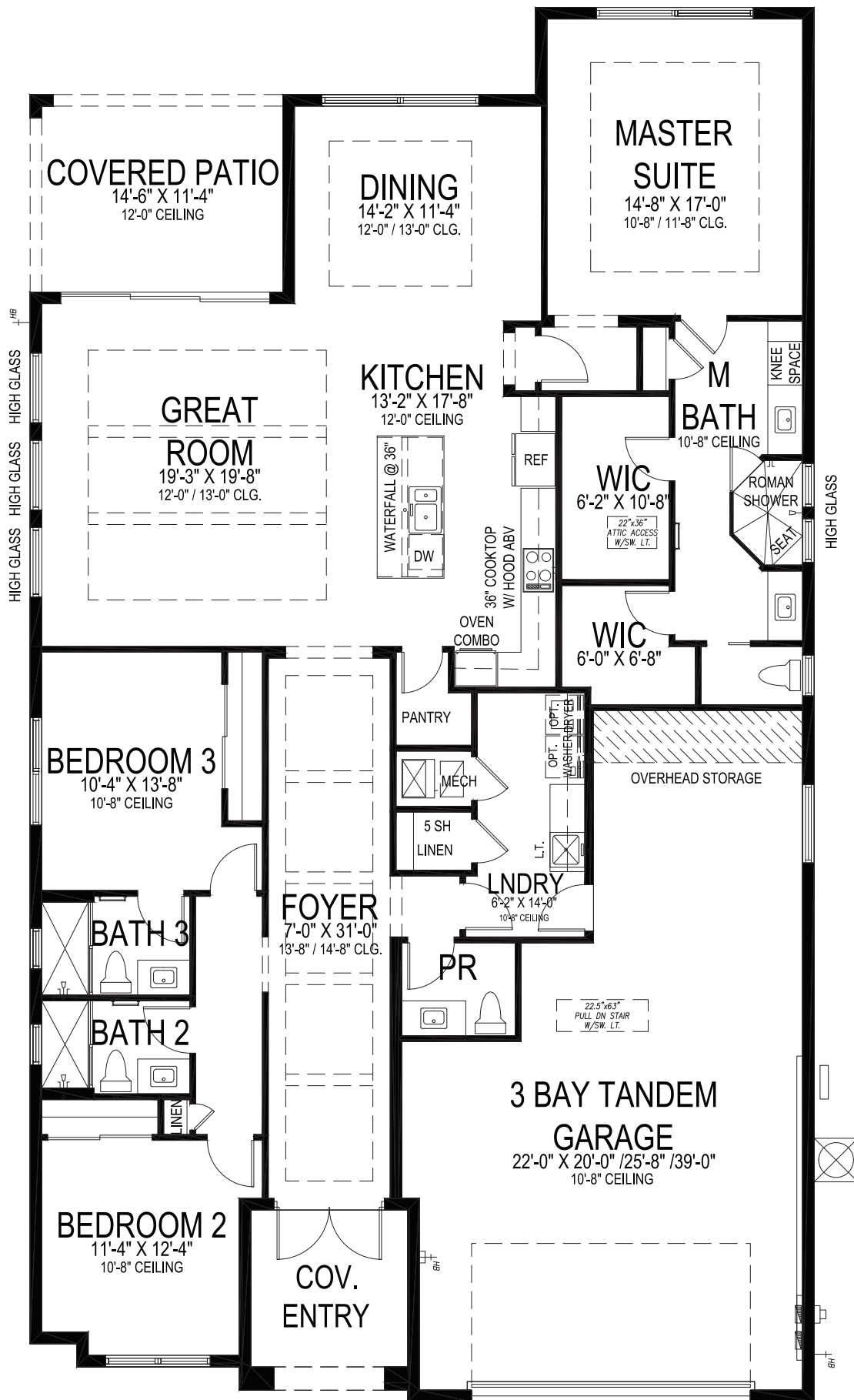
## AZURE

3 BEDS • DEN • 3 BATHS • 2 BAY GARAGE • 50' x 77' • 3,413 SF  
A/C: 2,551 sf • covered entry: 42 sf • covered patio: 200 sf • garage: 620 sf

All dimensions, features, specifications and square footages are approximate and subject to change without notice. Maps, plans, landscaping and elevation renderings are artist's conceptions, are not to scale, and may not accurately depict the homes or lots as they are built. © GHO Homes 2021. Revised February 13, 2023.



772.257.1100 • GHOHOMES.COM



# GHO HOMES

A GREEN BRICK PARTNER

## CERULEAN GRANDE

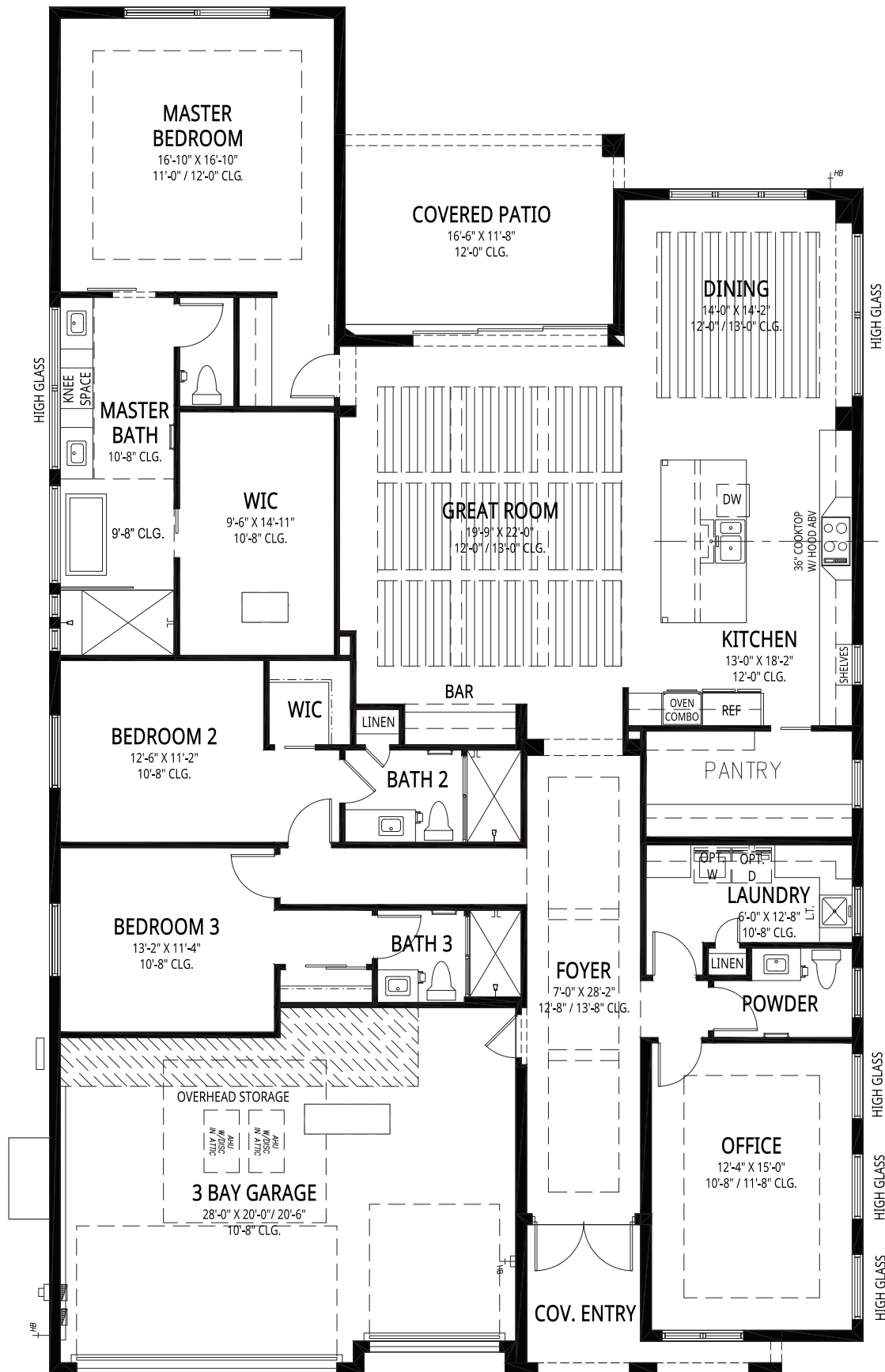
3 BEDS • 3.5 BATHS • 3 BAY GARAGE • 45' x 80' • 3,416 SF  
A/C: 2,413 sf • covered entry: 89 sf • covered patio: 164 sf • garage: 750 sf

All dimensions, features, specifications and square footages are approximate and subject to change without notice. Maps, plans, landscaping and elevation renderings are artist's conceptions, are not to scale, and may not accurately depict the homes or lots as they are built. © GH0 Homes 2023. Revised November 25, 2025.



CR000148

772.257.1100 • GHOHOMES.COM



# GHO HOMES

A GREEN BRICK PARTNER

## CITRON 25

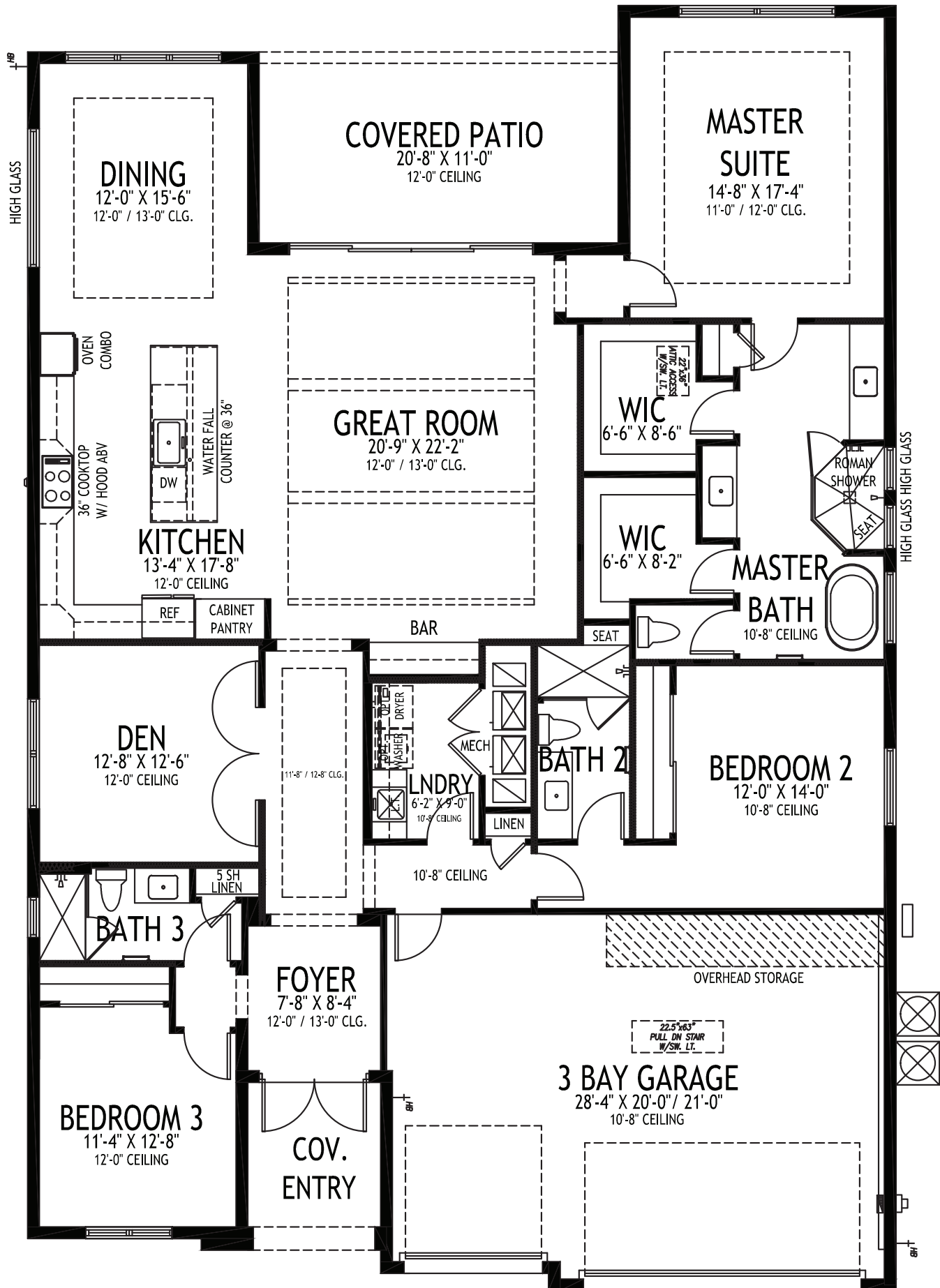
3 BEDS • DEN • 3.5 BATHS • 3 BAY GARAGE • 50' x 84' • 3,862 SF  
A/C: 2,990 sf • covered entry: 63 sf • covered patio: 195 sf • garage: 614 sf

All dimensions, features, specifications and square footages are approximate and subject to change without notice. Maps, plans, landscaping and elevation renderings are artist's conceptions, are not to scale, and may not accurately depict the homes or lots as they are built. © GHO Homes 2025. Revised June 12, 2025.



CR000148

772.257.1100 • GHOHOMES.COM



# GHO HOMES

A GREEN BRICK PARTNER

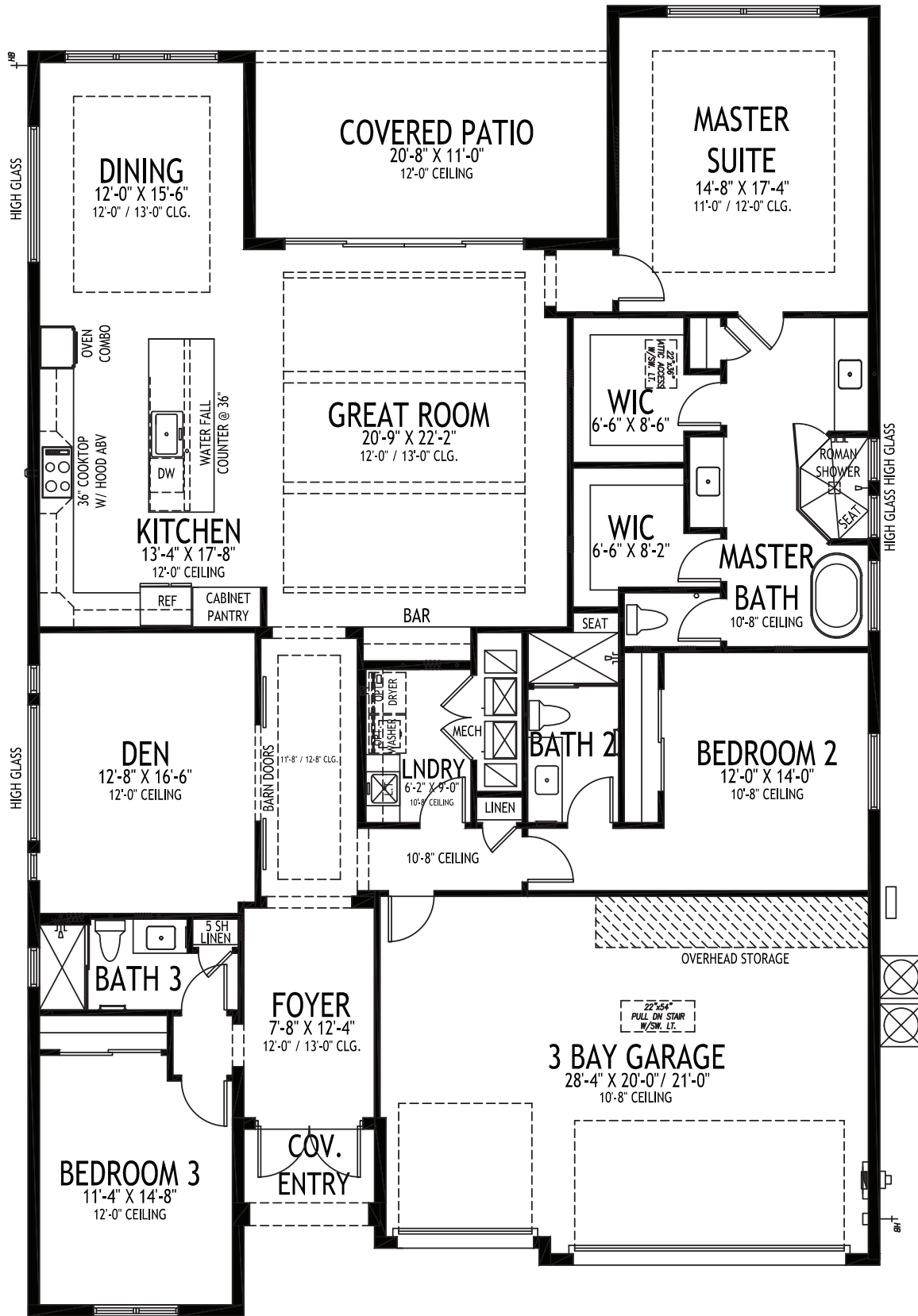
## INDIGO

3 BEDS • DEN • 3 BATHS • 3 BAY GARAGE • 50' x 74' • 3,543 SF  
A/C: 2,611 sf • covered entry: 75 sf • covered patio: 227 sf • garage: 630 sf

All dimensions, features, specifications and square footages are approximate and subject to change without notice. Maps, plans, landscaping and elevation renderings are artist's conceptions, are not to scale, and may not accurately depict the homes or lots as they are built. © GHO Homes 2021. Revised June 8, 2023.



772.257.1100 • GHOHOMES.COM



# GHO HOMES

A GREEN BRICK PARTNER

## INDIGO GRANDE

3 BEDS • DEN • 3 BATHS • 3 BAY GARAGE • 50' x 77' • 3,610 SF  
A/C: 2,720 sf • covered entry: 33 sf • covered patio: 227 sf • garage: 630 sf

All dimensions, features, specifications and square footages are approximate and subject to change without notice. Maps, plans, landscaping and elevation renderings are artist's conceptions, are not to scale, and may not accurately depict the homes or lots as they are built. © GHO Homes 2023. Revised June 12, 2023.



CR000148

772.257.1100 • GHOHOMES.COM



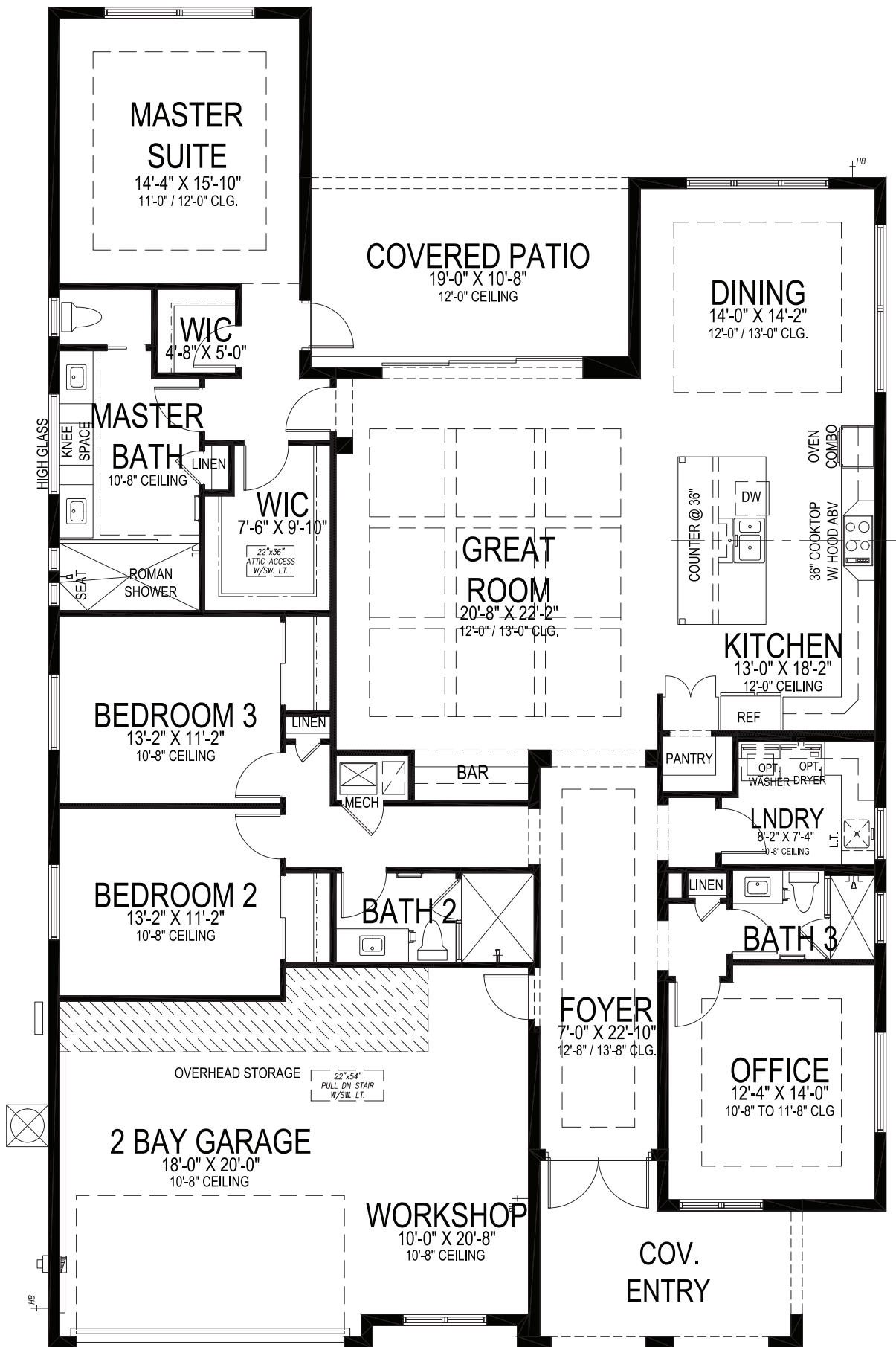


## INDIGO GRANDE 4

4 BEDS • 3 BATHS • 3 BAY GARAGE • 50' x 77' • 3,610 SF

A/C: 2,720 sf • covered entry: 33 sf • covered patio: 227 sf • garage: 630 sf





# GHO HOMES

A GREEN BRICK PARTNER

## SAPPHIRE

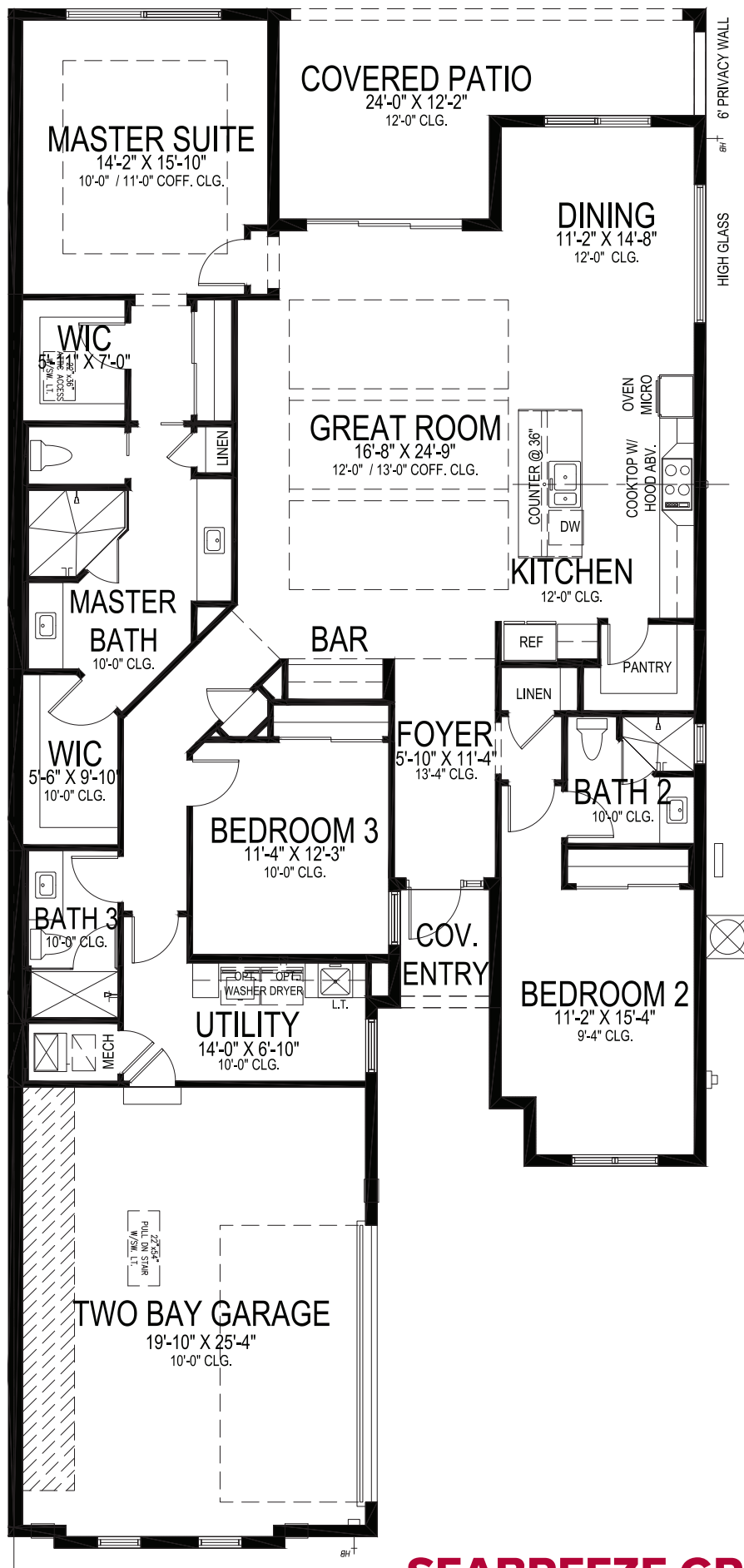
3 BEDS • DEN • 3 BATHS • 2+ BAY GARAGE • 50' x 80' • 3,599 SF  
A/C: 2,629 sf • covered entry: 149 sf • covered patio: 203 sf • garage: 618 sf

All dimensions, features, specifications and square footages are approximate and subject to change without notice. Maps, plans, landscaping and elevation renderings are artist's conceptions, are not to scale, and may not accurately depict the homes or lots as they are built. © GHO Homes 2021. Revised February 13, 2023.



CBO00148

772.257.1100 • GHOHOMES.COM



# GHO HOMES

A GREEN BRICK PARTNER

## SEABREEZE GRANDE

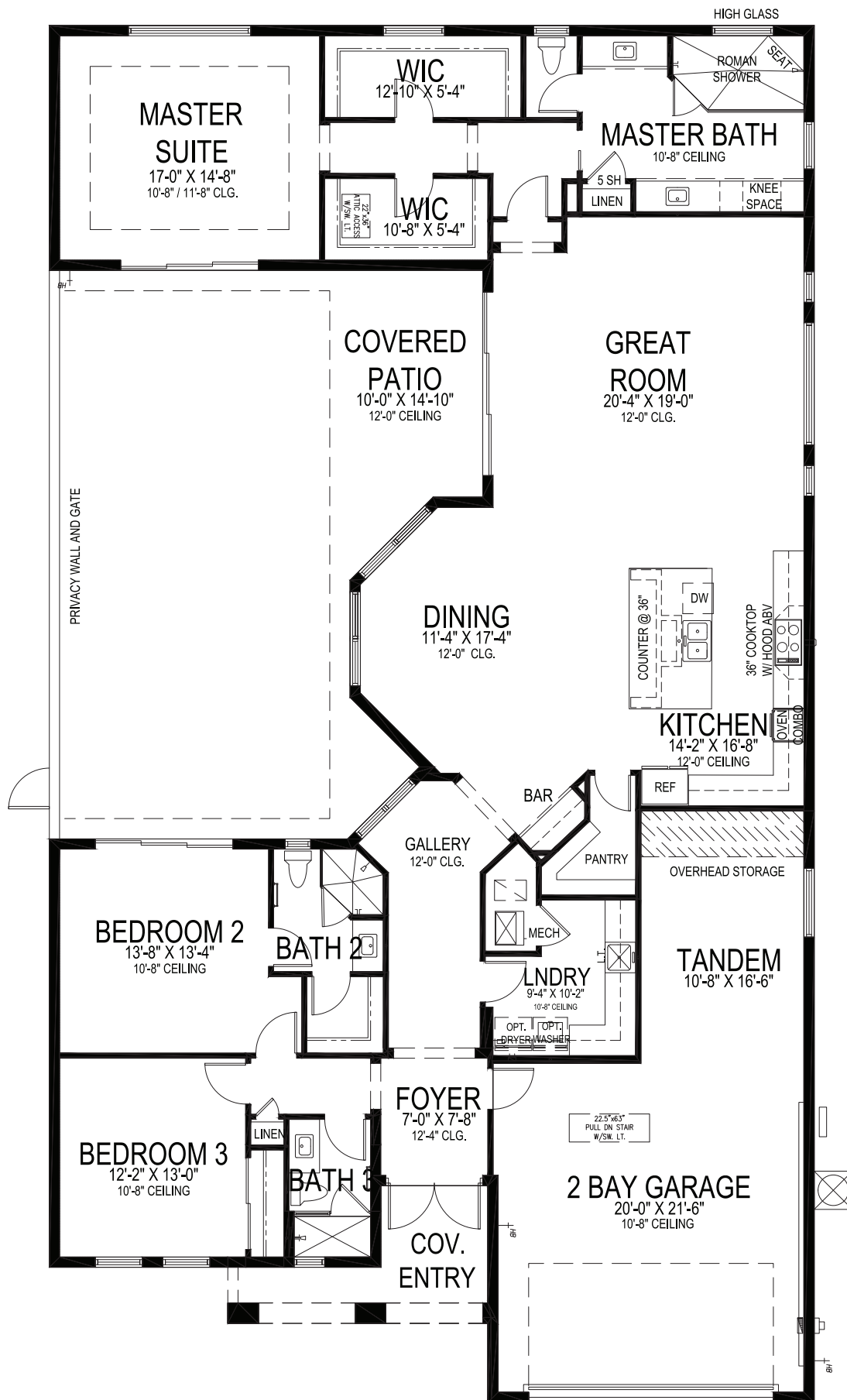
3 BEDS • 3 BATHS • 2 BAY GARAGE • 40' x 89' • 3,069 SF  
A/C: 2,254 sf • covered entry: 35 sf • covered patio: 225 sf • garage: 555 sf

All dimensions, features, specifications and square footages are approximate and subject to change without notice. Maps, plans, landscaping and elevation renderings are artist's conceptions, are not to scale, and may not accurately depict the homes or lots as they are built. © GHO Homes 2022. Revised July 5, 2023.



CR000148

772.257.1100 • GHOHOMES.COM



# GHO HOMES

A GREEN BRICK PARTNER

## VIRIDIAN

3 BEDS • 3 BATHS • 3 BAY GARAGE • 50' x 90' • 3,628 SF  
A/C: 2,657 sf • covered entry: 100 sf • covered patio: 213 sf • garage: 657 sf

All dimensions, features, specifications and square footages are approximate and subject to change without notice. Maps, plans, landscaping and elevation renderings are artist's conceptions, are not to scale, and may not accurately depict the homes or lots as they are built. © GHO Homes 2021. Revised January 26, 2024.



772.257.1100 • GHOHOMES.COM



# SEAGLASS



WABASSO BEACH ROAD • CR 510

93RD STREET



ISLAND  
SERIES



LAKE SIDE  
SERIES

EXISTING COMMUNITY

EXISTING COMMUNITY

EXISTING COMMUNITY

**SEAGLASS**  
BEACH CLUB

PROPOSED LOCATION

**GHO HOMES**

A GREEN BRICK PARTNER

All dimensions, features, specifications and square footages are approximate and subject to change without notice. Maps, plans, landscaping and elevation renderings are artist's conceptions, are not to scale, and may not accurately depict the homes or lots as they are built.

