



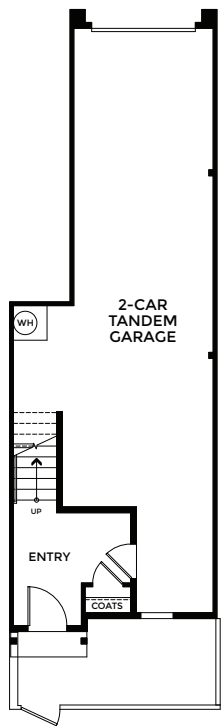
ASCEND

TRUMARKHOMES

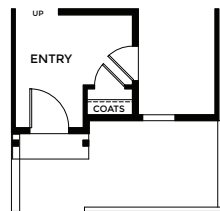
ASCEND

RESIDENCE 1

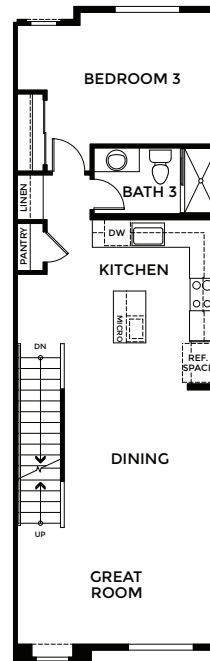
3 Bedrooms, 3 Baths, 2-Car Tandem Garage
Approx. 1,504 Finished Sq. Ft.



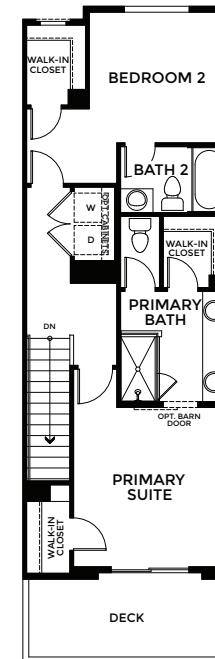
FIRST FLOOR



FIRST FLOOR
PATIO LOW WALL
(BUILDINGS 2, 3, AND 4)



SECOND FLOOR



THIRD FLOOR

Preliminary and subject to change.

925.281.3227 | Sales@Trumarkhomes.com | 905 N. Capitol Avenue, San Jose, CA 95133 | VIP-ASCEND.COM

TRUMARKHOMES

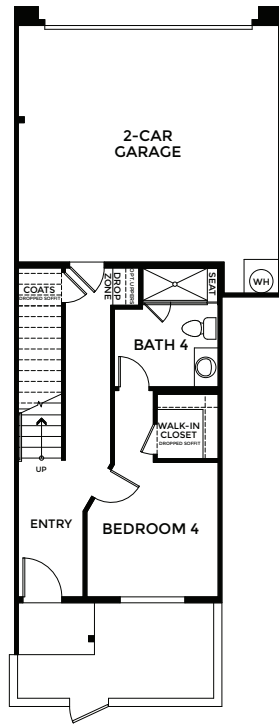
All information is for reference only. Prices, taxes and specifications subject to change and should be verified by all potential homebuyers. This is not an offer to sell but is intended for information only. The developer reserves the right to make modifications in materials, specifications, plans, pricing, various fees, designs, scheduling and delivery of homes without prior notice. All dimensions and square footages are approximate. Plan and dimensions may contain minor variations from floor to floor. CA DRE license no. 01877720. Updated 01/27/2025. 🏠

PRELIMINARY

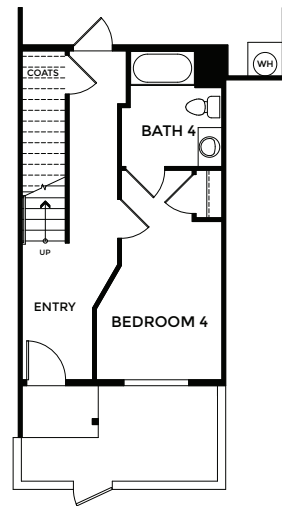
ASCEND

RESIDENCE 2

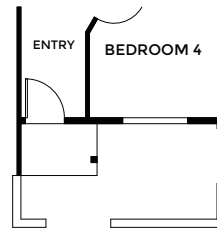
4 Bedrooms, 4 Baths, 2-Car Garage
 Approx. 1,721 Finished Sq. Ft.



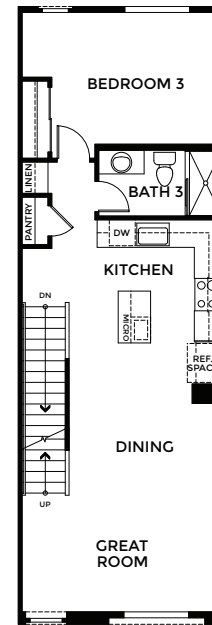
FIRST FLOOR



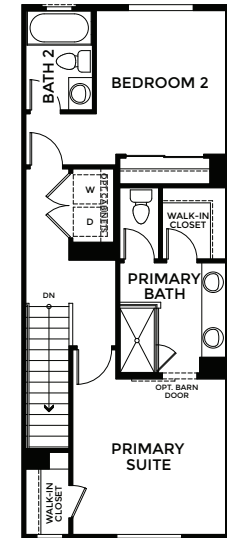
ACCESSIBLE UNIT



FIRST FLOOR PATIO LOW WALL (BUILDINGS 2, 3, AND 4)



SECOND FLOOR



THIRD FLOOR

Preliminary and subject to change.

925.281.3227 | Sales@Trumarkhomes.com | 905 N. Capitol Avenue, San Jose, CA 95133 | VIP-ASCEND.COM

TRUMARKHOMES

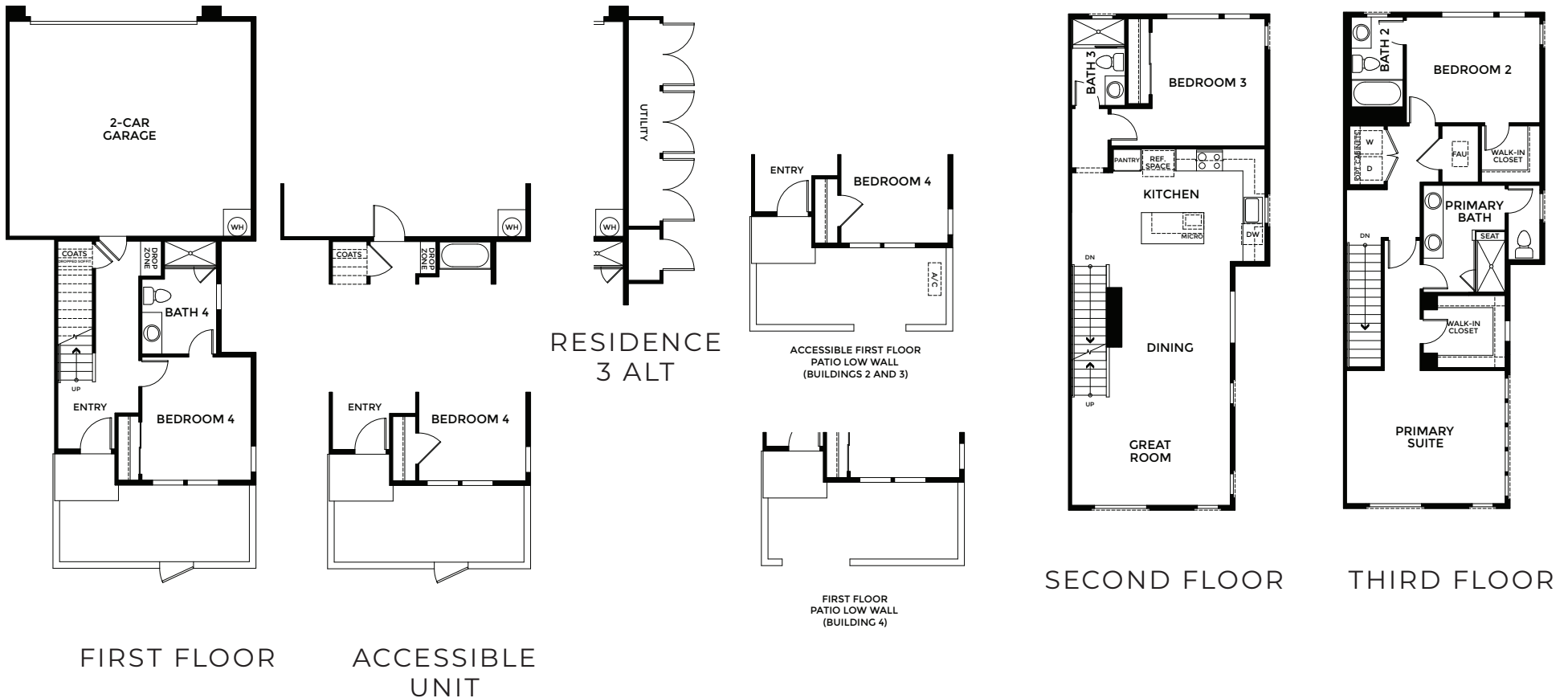
All information is for reference only. Prices, taxes and specifications subject to change and should be verified by all potential homebuyers. This is not an offer to sell but is intended for information only. The developer reserves the right to make modifications in materials, specifications, plans, pricing, various fees, designs, scheduling and delivery of homes without prior notice. All dimensions and square footages are approximate. Plan and dimensions may contain minor variations from floor to floor. CA DRE license no. 01877720. Updated 01/27/2025. 🏠

PRELIMINARY

ASCEND

RESIDENCE 3

4 Bedrooms, 4 Baths, 2-Car Garage
 Approx. 1,944 Finished Sq. Ft.



PRELIMINARY

Preliminary and subject to change.

925.281.3227 | Sales@Trumarkhomes.com | 905 N. Capitol Avenue, San Jose, CA 95133 | VIP-ASCEND.COM

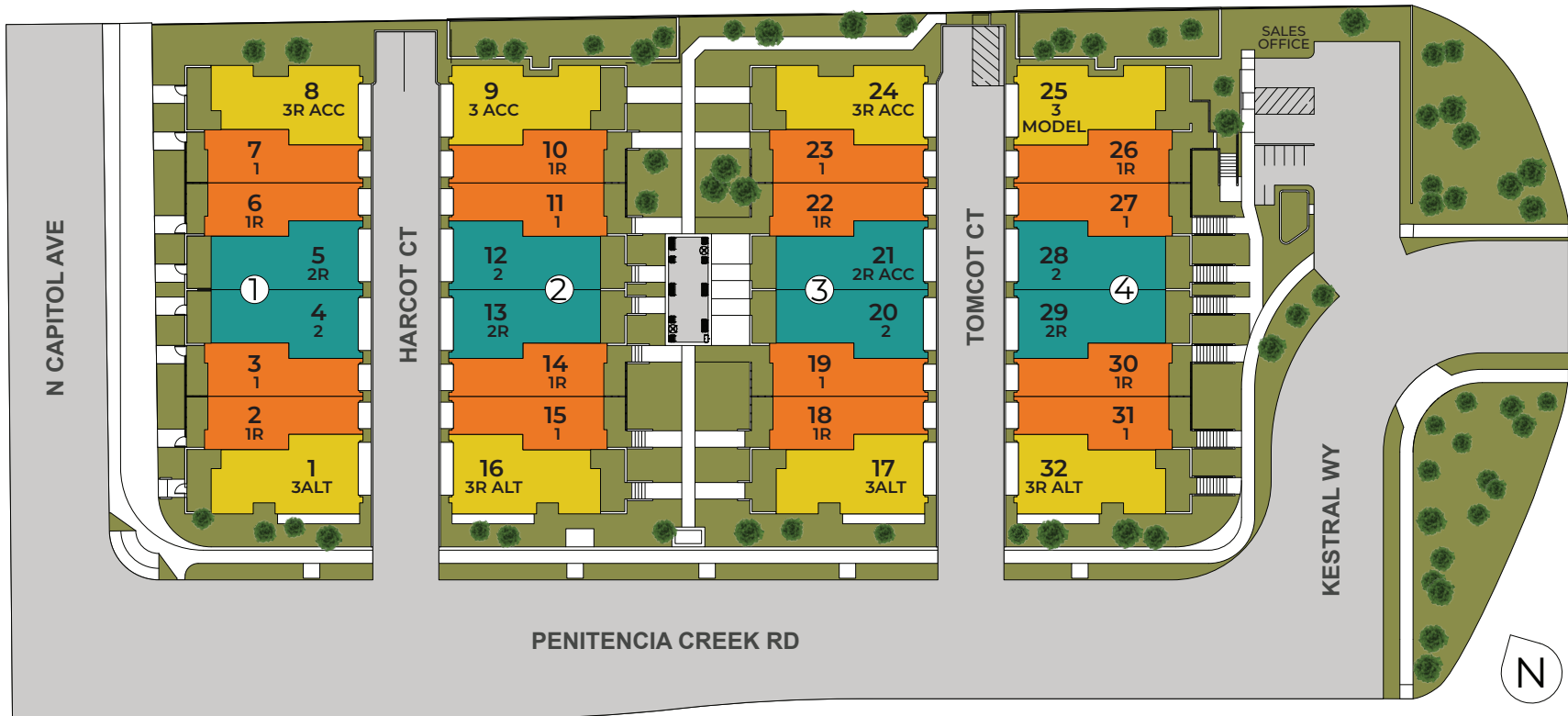
TRUMARKHOMES

All information is for reference only. Prices, taxes and specifications subject to change and should be verified by all potential homebuyers. This is not an offer to sell but is intended for information only. The developer reserves the right to make modifications in materials, specifications, plans, pricing, various fees, designs, scheduling and delivery of homes without prior notice. All dimensions and square footages are approximate. Plan and dimensions may contain minor variations from floor to floor. CA DRE license no. 01877720. Updated 01/27/2025. 🏠

ASCEND

SITE MAP

32 Attached Townhomes



RESIDENCE 1 RESIDENCE 2 RESIDENCE 3

PRELIMINARY

Preliminary and subject to change. 925.281.3227 | Sales@Trumarkhomes.com | 905 N. Capitol Avenue, San Jose, CA 95133 | VIP-ASCEND.COM

TRUMARK HOMES

All information is for reference only. Prices, taxes and specifications subject to change and should be verified by all potential homebuyers. This is not an offer to sell but is intended for information only. The developer reserves the right to make modifications in materials, specifications, plans, pricing, various fees, designs, scheduling and delivery of homes without prior notice. All dimensions and square footages are approximate. Plan and dimensions may contain minor variations from floor to floor. CA DRE license no. 01877720. Updated 01/27/2025. 📍



ASCEND

TRUMARKHOMES

Preliminary and subject to change.

925.281.3227 | Sales@Trumarkhomes.com | 905 N. Capitol Avenue, San Jose, CA 95133 | VIP-ASCEND.COM

TRUMARKHOMES

All information is for reference only. Prices, taxes and specifications subject to change and should be verified by all potential homebuyers. This is not an offer to sell but is intended for information only. The developer reserves the right to make modifications in materials, specifications, plans, pricing, various fees, designs, scheduling and delivery of homes without prior notice. All dimensions and square footages are approximate. Plan and dimensions may contain minor variations from floor to floor. CA DRE license no. 01877720. Updated 01/27/2025. 