



## LUCAYA POINTE COMMUNITY PRICE LIST

PLAN	BED	BATH	DEN	GARAGE	SF	PRICE
Cypress	2	2.5	Y	3 BAY	2,241	\$831,525
Cypress Grande	3	3.5	N	3 BAY	2,321	\$851,525
Amaryllis	3	3	Y	3 BAY	2,368	\$861,525
Magnolia 21 Jem	3	3	N	3 BAY	2,610	\$876,525
Magnolia 21	3	3	Y	3 BAY	2,626	\$893,525
Dahlia 21	3	3	N	3 BAY	2,657	\$910,525
Magnolia 21 Grande	3	4	Y	3 BAY	2,750	\$931,525

### VILLA FLOORPLANS

PLAN	BED	BATH	DEN	GARAGE	SF	PRICE
Seabreeze	3	3	N	2 BAY	2,244	\$719,525

### INVENTORY HOMES

PLAN	BED	BATH	DEN	GARAGE	SF	PRICE
Dahlia 21 4133 Lucaya Pointe Way, Vero Beach, FL 32967 Lot: 1	3	3	N	3 BAY	2,657	\$890,900
Cypress 4121 Lucaya Pointe Way, Vero Beach, FL 32967 Lot: 3	3	2.5	N	3 BAY	2,241	\$891,875
Magnolia 21 4237 Lucaya Pointe Way, Vero Beach, FL 32967 Lot: 58	3	3	Y	3 BAY	2,626	\$899,000
Cypress 4226 Lucaya Pointe Way, Vero Beach, FL 32967 Lot: 97	2	2.5	Y	3 BAY	2,241	\$929,900
Seabreeze 1910 Arawak Street, Vero Beach, FL 32967 Lot: 40	3	3	N	2 BAY	2,244	\$742,990

All base prices above include a standard homesite. Lakefront oversized and select homesites are limited, unique and will have a lot premium associated.

Not all plans are designed to fit on every homesite. Contact your salesperson for specific lot information.

To learn more about these homes, please contact  
Diana Leever at 772.257.1100 or e-mail [dianal@ghohomes.com](mailto:dianal@ghohomes.com)



Seller reserves the right to make changes or modifications to plans, maps, plan specifications, materials, Features, and colors without notice. Prices are subject to change without notice. Maps, plans, landscaping and elevation renderings are artist's conceptions, not to scale, and may not accurately depict the homes or lots as they are built. This brochure is for illustrative purposes only and not a part of a legal contract. Lic. #CBC051145



## LUCAYA POINTE COMMUNITY PROFILE

### COMMUNITY OVERVIEW

Lucaya Pointe in Vero Beach is an intimate gated community with 108 new homes offering both villas and single-family, designed to cater to a variety of lifestyles. The community is thoughtfully planned with streetlights and sidewalks, promoting a walkable environment with large oak trees. Enjoy a low-maintenance lifestyle with unmatched convenience, within 10 minutes from downtown Vero Beach, the Riverside Theater, pristine beaches, a regional airport, and top-tier medical care at Indian River Hospital. Lucaya Pointe blends tranquility with accessibility, making it the perfect place to call home.

Whether you are looking for a villa or single-family home, these spacious plans offer 2 to 3 bedroom, 2.5 to 4 bath, 2 to 3-car garages and range from 2,200 to 2,750 living sq. ft. Homes can be customized to include additional bedroom, club or hobby rooms, plus a variety of master bath options and much more. With our Tailor Made Program, as well as the Design Studio allowing buyers to customize a home with personalized touches and upgrades. Each new construction home is equipped with natural gas and all homes feature private pools.

#### Driving Directions:

From I-95 Exit 147 head E State Rd 60 E to 58 Ave and turn left. Continue on 58th Ave to 41 St Street and turn right. Cross over US 1 and Lucaya Pointe will be on your left.

#### Total Number of Homes:

108 Homesites consisting of Single-Family Homes and Attached Villas

#### Pet Policy:

Pets allowed. Please review HOA documents for full description of rules on animals.

#### Size of Typical Lots:

3 Lot Sizes - See sales agent for full details

#### Community Dues/Fees:

Single Family Homes estimated to be \$262 monthly.

Attached Villas \$220 month.

A Capital Contribution Fee of \$2,050 will be due on closing to the HOA.

#### Elementary School:

Dodgertown Elementary School, 4350 43rd Ave, Vero Beach, FL 32967

For questions about additional school options, please contact the IRC School Board about their Parent's Choice program 772.564.3000 or click here for website .

#### Middle School:

Gifford Middle School, 4530 28th Ct., Vero Beach, FL 32967.

To learn about the school choice program, click here for website .

#### High School:

Vero Beach High School, 1707 16th St., Vero Beach, FL 32960

To learn about the school choice program, click here for website .

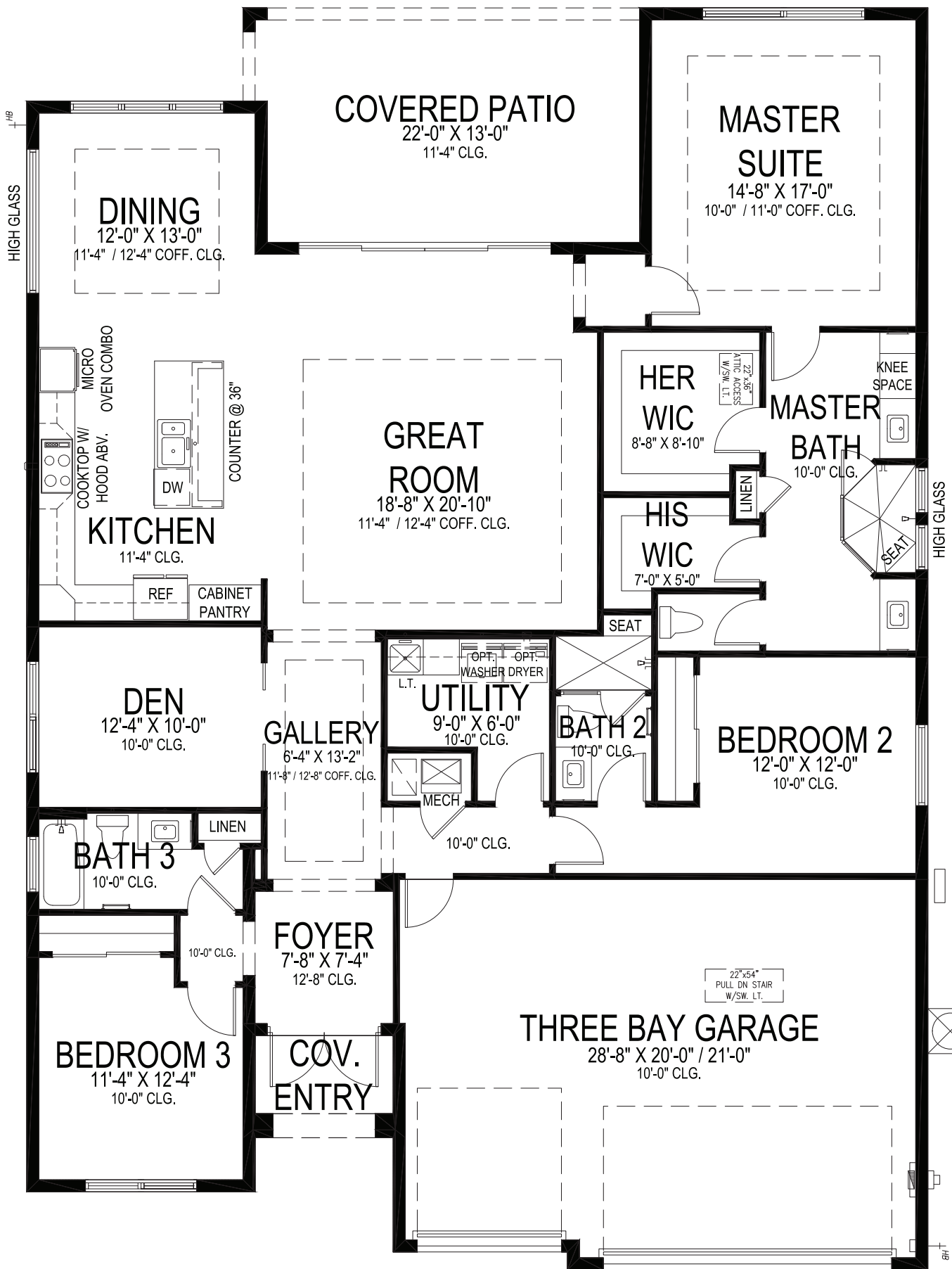
#### Amenities:

Lake maintenance, common area and lawn care for all residents, community gate, street lighting and the perfect location to live.

#### Entry Roads:

Private Roads





**GHO HOMES**

A GREEN BRICK PARTNER

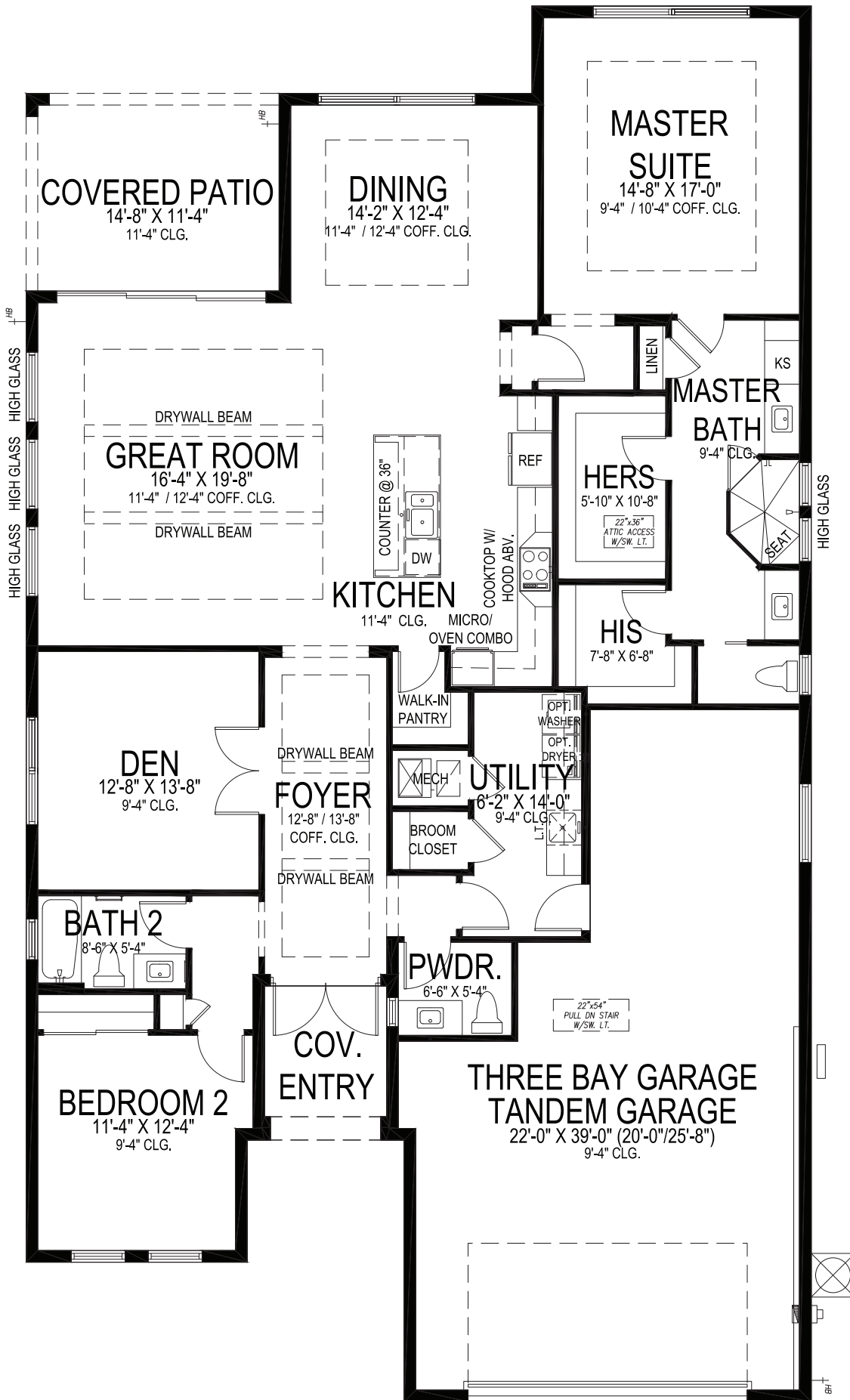
**AMARYLLIS**

3 BEDS • DEN • 3 BATHS • 3 BAY GARAGE • 50' x 70' • 3,317 SF  
A/C: 2,368 sf • covered entry: 43 sf • covered patio: 276 sf • garage: 630 sf

All dimensions, features, specifications and square footages are approximate and subject to change without notice. Maps, plans, landscaping and elevation renderings are artist's conceptions, are not to scale, and may not accurately depict the homes or lots as they are built. © GHO Homes 2022. Revised November 11, 2022.



772.257.1100 • GHOHOMES.COM



## CYPRESS

2 BEDS • DEN • 2.5 BATHS • 3+ BAY GARAGE • 45' x 80' • 3,209 SF  
A/C: 2,241 sf • covered entry: 52 sf • covered patio: 164 sf • garage: 752 sf

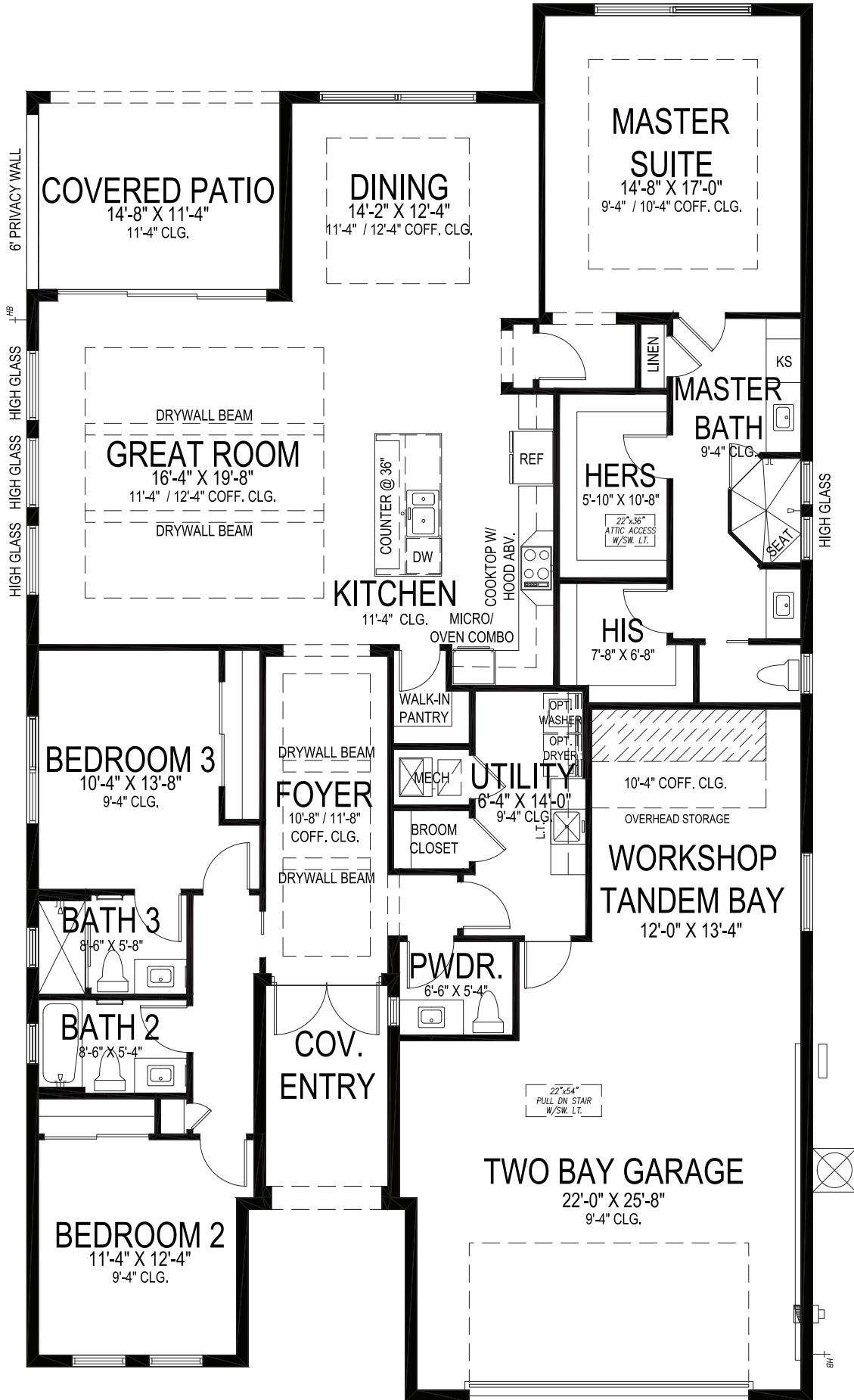
# GHO HOMES

A GREEN BRICK PARTNER

772.257.1100 • GHOHOMES.COM

All dimensions, features, specifications and square footages are approximate and subject to change without notice. Maps, plans, landscaping and elevation renderings are artist's conceptions, are not to scale, and may not accurately depict the homes or lots as they are built. © GHO Homes 2020. Revised March 10, 2025.





## CYPRESS GRANDE

3 BEDS • 3.5 BATHS • 2+ BAY GARAGE • 45' x 80' • 3,330 SF  
A/C: 2,321 sf • covered entry: 89 sf • covered patio: 164 sf • garage: 756 sf

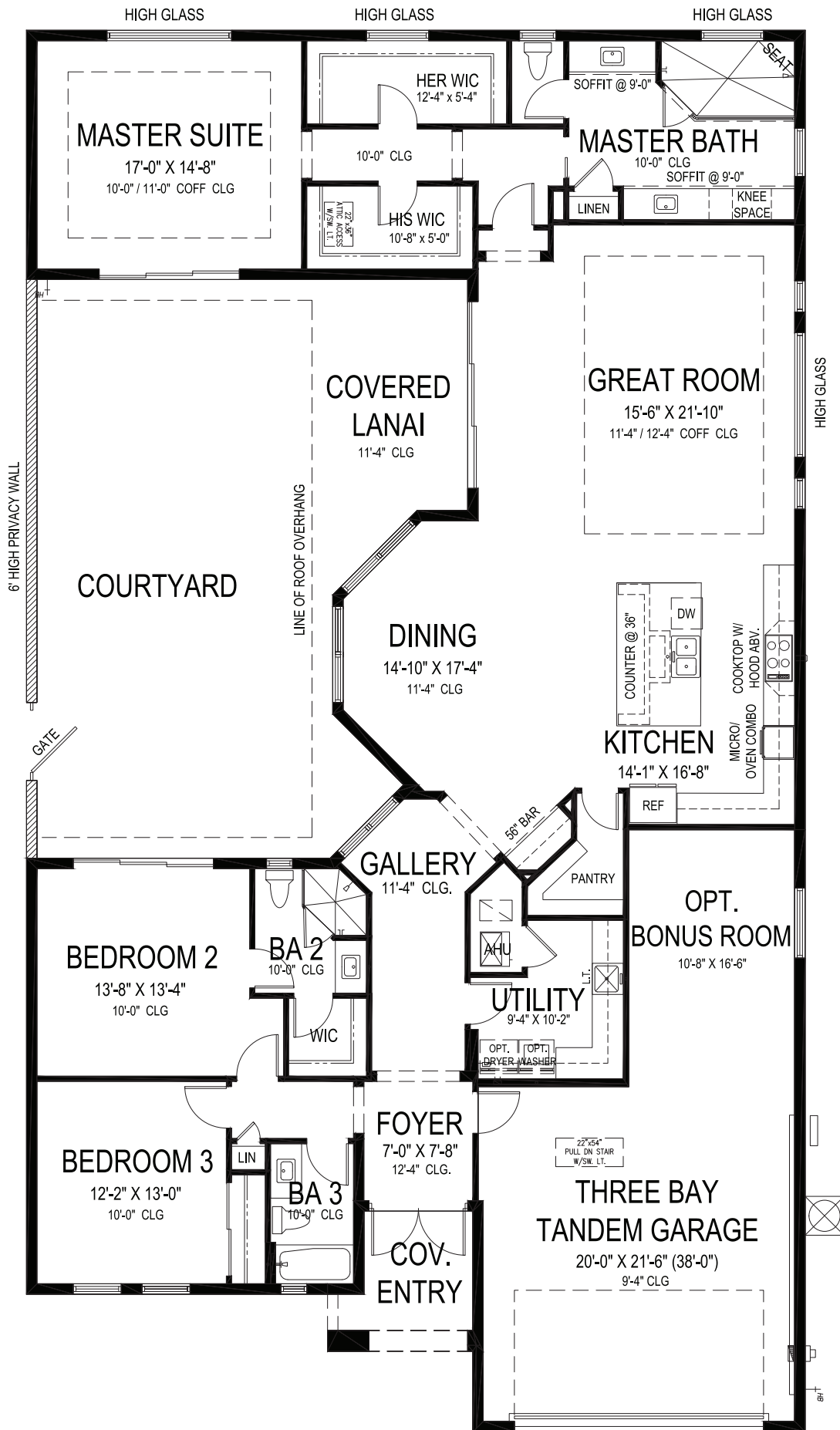
# GHO HOMES

A GREEN BRICK PARTNER

772.257.1100 • GHOHOMES.COM

All dimensions, features, specifications and square footages are approximate and subject to change without notice. Maps, plans, landscaping and elevation renderings are artist's conceptions, are not to scale, and may not accurately depict the homes or lots as they are built. © GHO Homes 2023. Revised September 27, 2023.





## DAHLIA 21

3 BEDS • 3 BATHS • 3+ BAY GARAGE • 50' x 90' • 3,599 SF  
A/C: 2,657 sf • covered entry: 72 sf • covered patio: 213 sf • garage: 657 sf

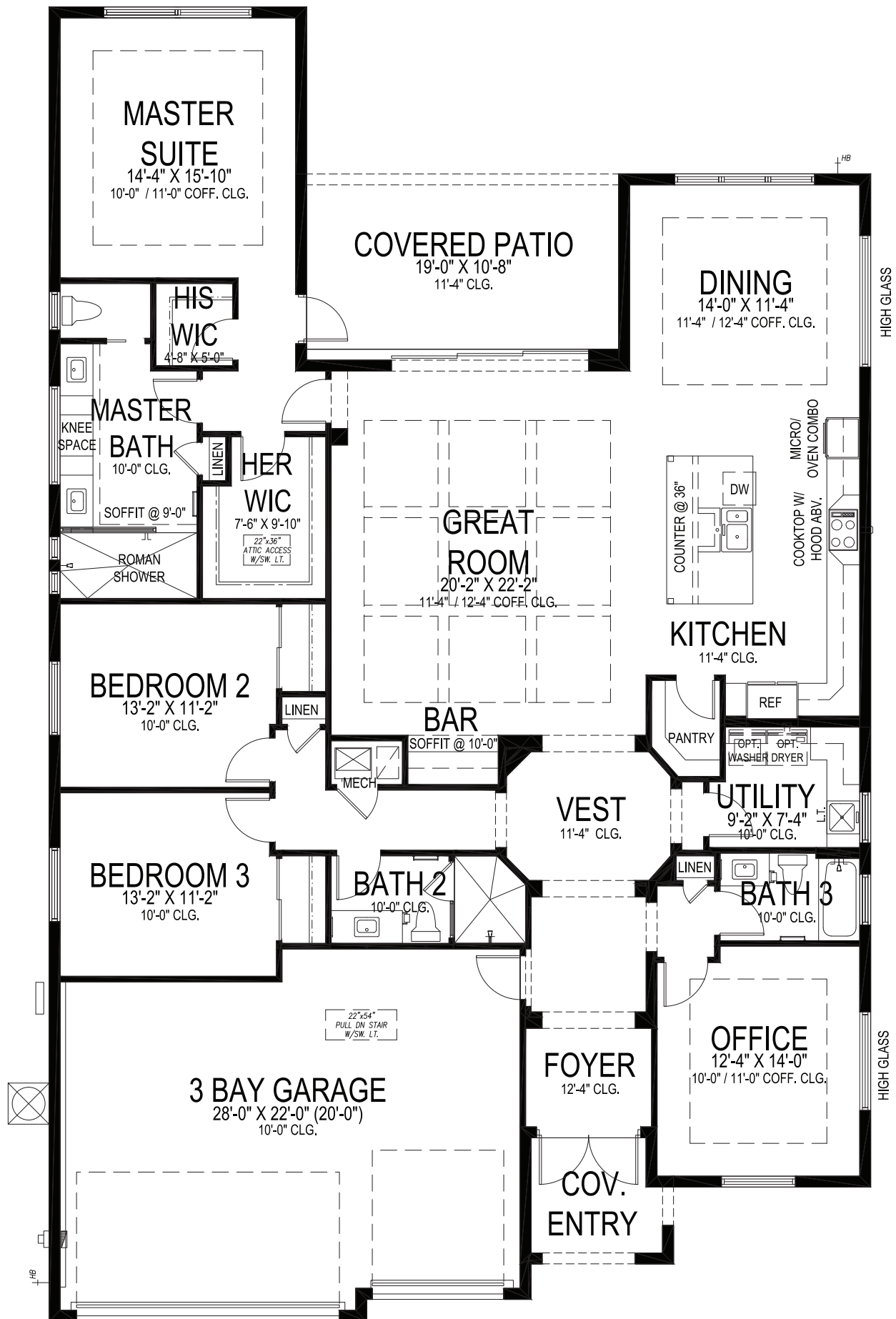
# GHO HOMES

A GREEN BRICK PARTNER

772.257.1100 • GHOHOMES.COM

All dimensions, features, specifications and square footages are approximate and subject to change without notice. Maps, plans, landscaping and elevation renderings are artist's conceptions, are not to scale, and may not accurately depict the homes or lots as they are built. © GHO Homes 2020. Revised October 2, 2023.





**GHO HOMES**

A GREEN BRICK PARTNER

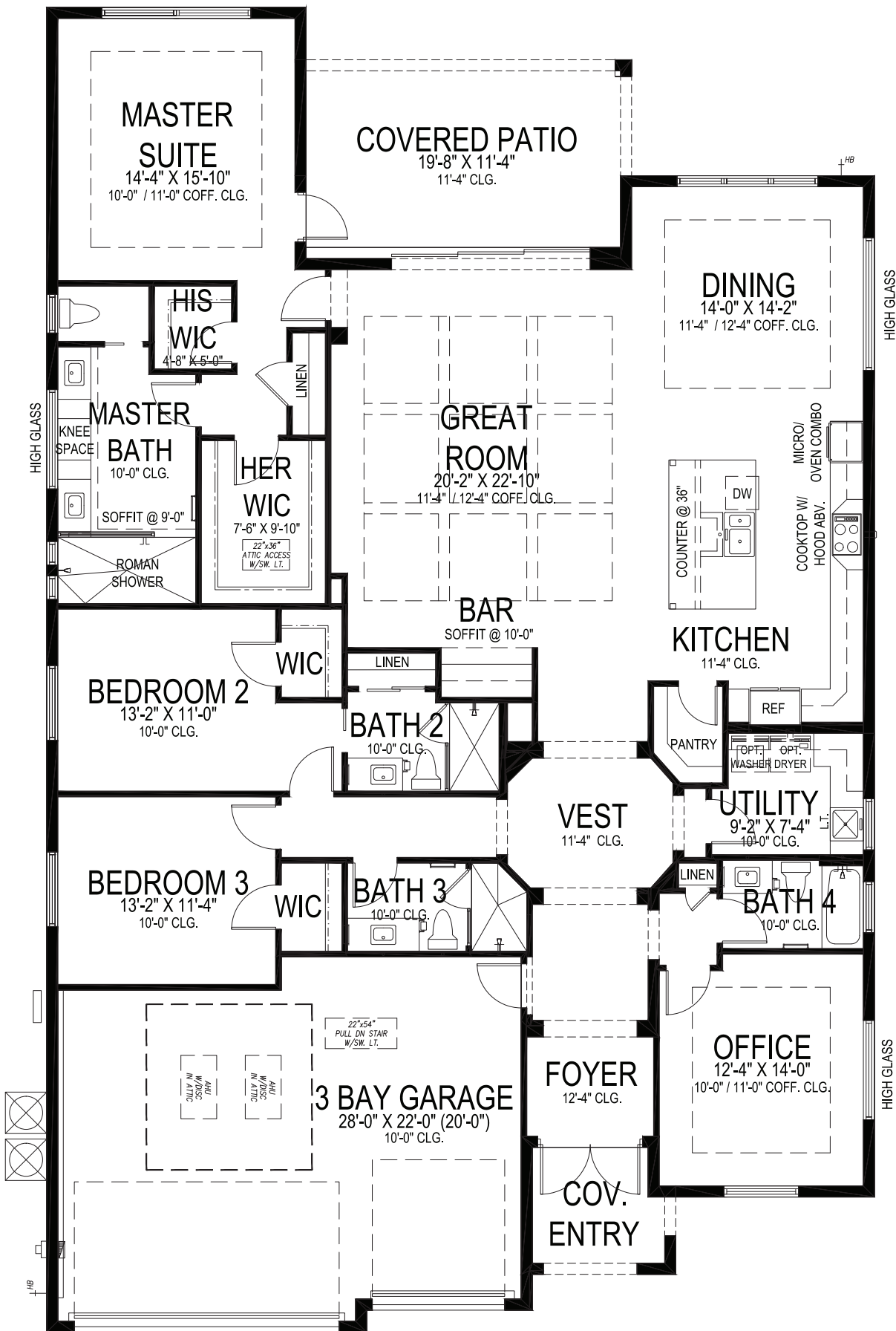
**MAGNOLIA 21**

3 BEDS • DEN • 3 BATHS • 3 BAY GARAGE • 50' x 80' • 3,509 SF  
A/C: 2,626 sf • covered entry: 61 sf • covered patio: 203 sf • garage: 619 sf

All dimensions, features, specifications and square footages are approximate and subject to change without notice. Maps, plans, landscaping and elevation renderings are artist's conceptions, are not to scale, and may not accurately depict the homes or lots as they are built. © GHO Homes 2020. Revised November 8, 2023.



772.257.1100 • GHOHOMES.COM



**GHO HOMES**

A GREEN BRICK PARTNER

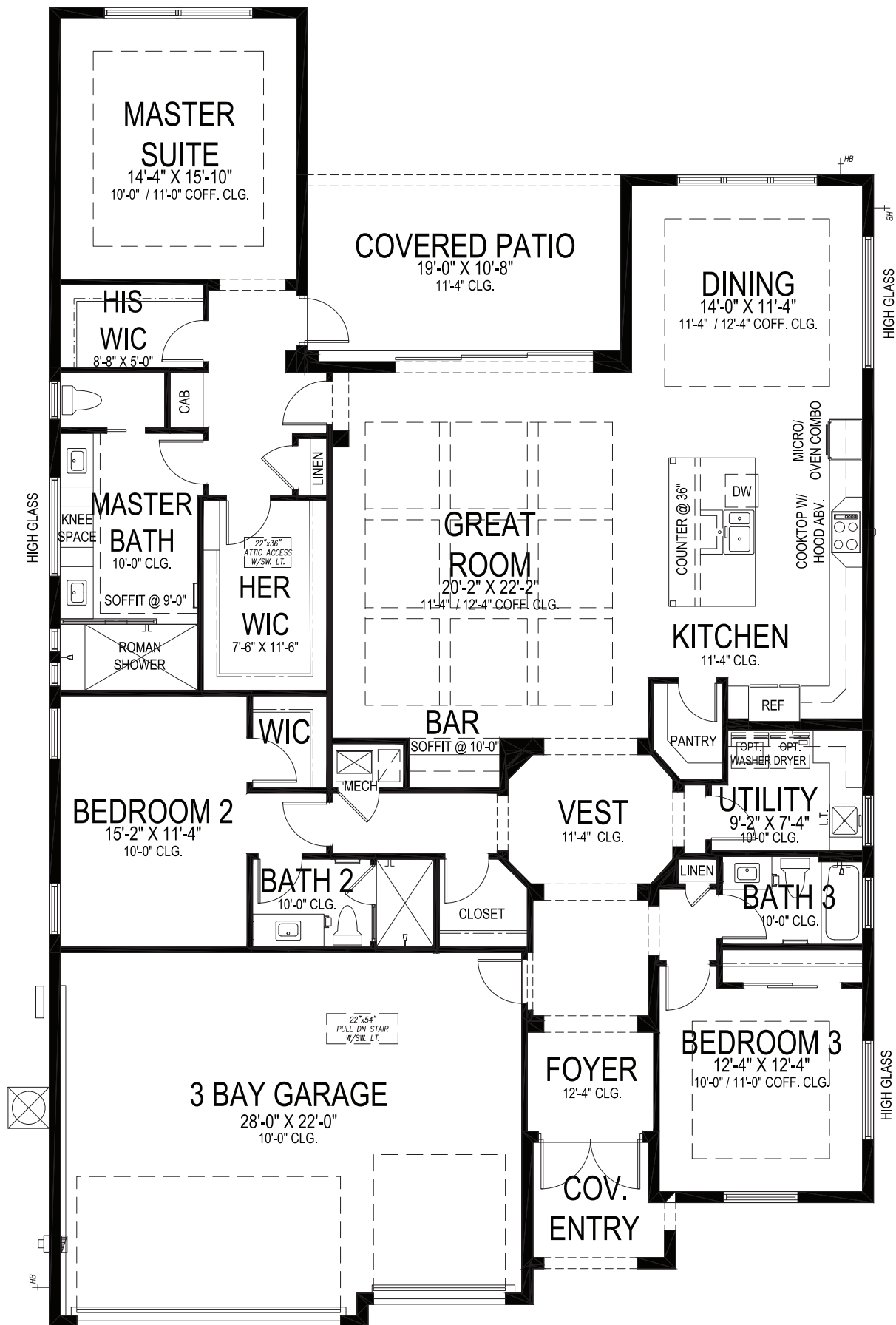
**MAGNOLIA 21 GRANDE**

3 BEDS • DEN • 4 BATHS • 3 BAY GARAGE • 50' x 80' • 3,667 SF  
A/C: 2,750 sf • covered entry: 61 sf • covered patio: 240 sf • garage: 616 sf

All dimensions, features, specifications and square footages are approximate and subject to change without notice. Maps, plans, landscaping and elevation renderings are artist's conceptions, are not to scale, and may not accurately depict the homes or lots as they are built. © GHO Homes 2023. Revised September 20, 2023.



772.257.1100 • GHOHOMES.COM



**GHO HOMES**

A GREEN BRICK PARTNER

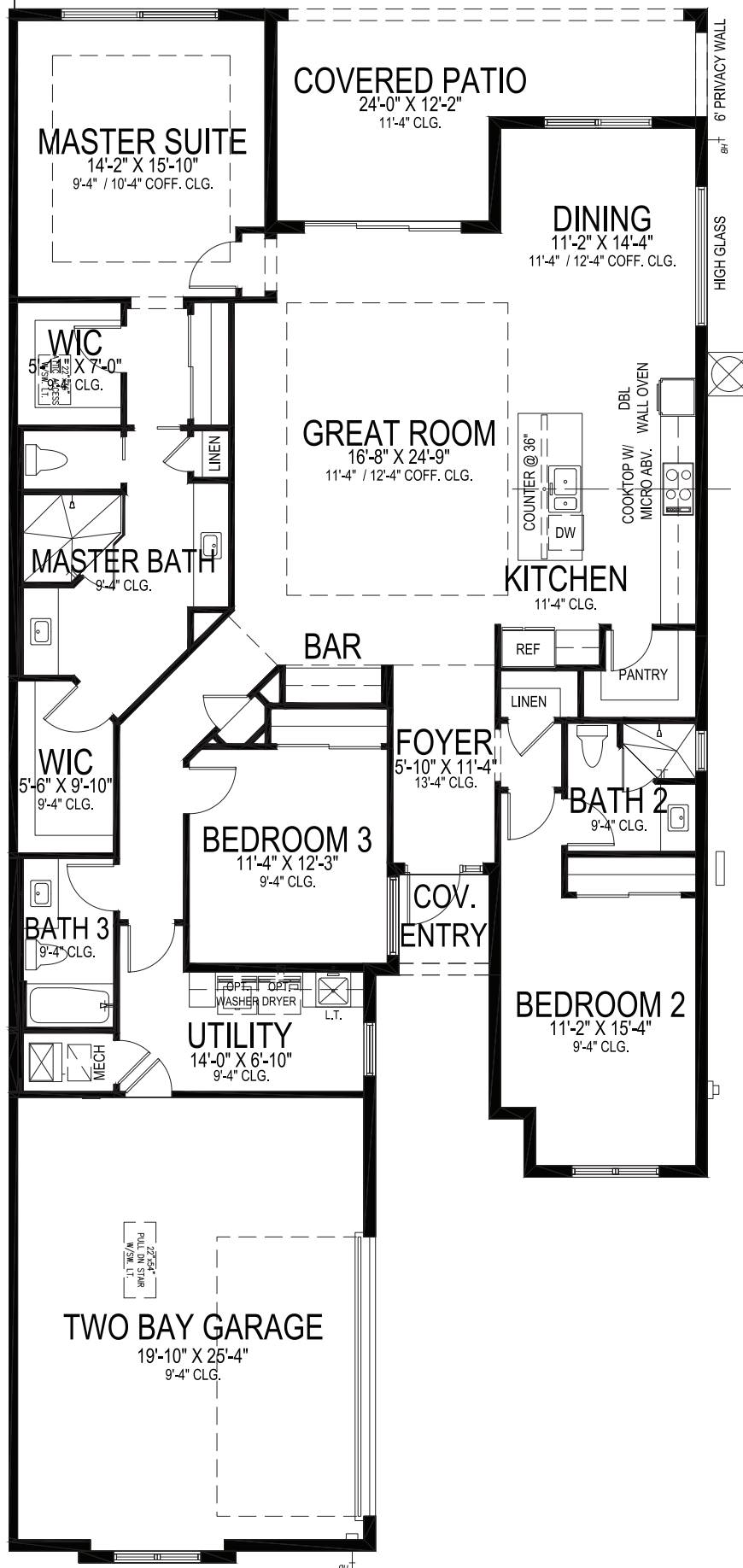
**MAGNOLIA 21 JEM**

3 BEDS • 3 BATHS • 3 BAY GARAGE • 50' x 80' • 3,517 SF  
A/C: 2,610 sf • covered entry: 60 sf • covered patio: 203 sf • garage: 644 sf

All dimensions, features, specifications and square footages are approximate and subject to change without notice. Maps, plans, landscaping and elevation renderings are artist's conceptions, are not to scale, and may not accurately depict the homes or lots as they are built. © GHO Homes 2024. Revised July 2, 2024.



772.257.1100 • GHOHOMES.COM



## SEABREEZE

3 BEDS • 3 BATHS • 2 BAY GARAGE • 40' x 89' • 3,051 SF  
 A/C: 2,244 sf • covered entry: 30 sf • covered patio: 225 sf • garage: 552 sf

# GHO HOMES

A GREEN BRICK PARTNER

772.257.1100 • GHOHOMES.COM

All dimensions, features, specifications and square footages are approximate and subject to change without notice. Maps, plans, landscaping and elevation renderings are artist's conceptions, are not to scale, and may not accurately depict the homes or lots as they are built. © GHO Homes 2021. Revised September 7, 2022.





**LUCAYA  
POINTE**

**GHO HOMES**  
A GREEN BRICK PARTNER

772.257.1100  
GHOHOMES.COM



All dimensions, features, specifications and square footages are approximate and subject to change without notice. Maps, plans, landscaping and elevation renderings are artist's conceptions, are not to scale, and may not accurately depict the homes or lots as they are built. Prices and specifications are subject to change without notice. Oral representation cannot be relied upon as correctly stated representations of the developer. For correct representations, make reference to this advertisement and to the documents required by section 718.503, Florida Statutes, to be furnished by a developer to a buyer or lessee. Images displayed may not be the actual property for sale, but may be model or other homes built of similar design.