

CHESTNUT RIDGE

Now Selling

 A Natural Gas Community



NEW HOMES FROM THE \$300s

Welcome to Chestnut Ridge, a Beverly Homes-exclusive community in Conway, SC. Located near International Drive, Hwy 22, and Hwy 31, Chestnut Ridge offers new homes with thoughtful details and innovative designs. The Natural-Gas community offers a variety of one and two-story floor plans with impressive standard features. Experience the freedom to make custom home changes to your floor plan. Pool and Cabana Coming Soon!

Community Highlights

- ◆ Low Monthly HOA
- ◆ Minutes to International Drive
- ◆ Water View & Privacy Lots
- ◆ Home Customization Available
- ◆ 3, 4 & 5 Bedroom Models Available
- ◆ Natural-Gas Community

Jessie Capanelli | Sales Consultant

717.808.5416 | Jessie@beverlyhomessc.com

Sales Center: 459 Hayloft Circle | Conway SC | 29526


BEVERLY
HOMES
Building Lifestyles



Beverly Homes is an Equal Housing Opportunity Builder and a member of the Coastal Carolinas Association of REALTORS®. Photography, Design, and Details are for illustration purposes only and may vary. Community and home information, including Features, Pricing, Specifications, and Dimensions that are described or depicted, are conceptual and proposed and are subject to change and sale at any time without notice or obligation.



Impressive Standard Features

Classic Finishing Touches

- 9' Ceilings on 1st Floor Standard w/ 8' on Second Floor (Per Plan)
- Smooth Finish Drywall Ceilings throughout, Including Garage
- Fully Finished, Painted, & Trimmed Garage
- Garage attic Space floored for storage & Drop Down Stair Access (Per Plan)
- Vaulted & Tray Ceilings (Per Plan)
- Select Vinyl Floorings in Wet Areas
- Upgraded **Shaw®** Stain Resistant Carpet w/ 6lb Rebound Padding in Bedrooms, Living, Hallways, & Bonus rooms
- Upgraded Trim Package, including 3.25 Decorative Base Board, 2 1/4" Casing, & Arched Openings (Per Plan)
- Decorative Cheyenne Design Interior Doors
- Distinctive 6 Panel Door from the Garage into the Home & Front Door
- Brushed Nickel Hardware on All Interior Doors
- Walk-In Closets w/ Ventilated Closet Shelving, Including 1 Double Row in Master Bedrooms
- Decorative Chrome or Brushed Nickel Glass Light Fixtures (Per Plan)
- White Toggle Switches
- Pre-Wired with Data Lines in Predetermined locations throughout the home – All Bedrooms & Living (Per Plan)
- Fans in Master Bedroom, Living Room, & Porches (Per Plan)

Designer Kitchens

- Spacious Kitchen Plans Designed to entertain your guests & serve your family
- **Frigidaire®** Energy Saving Stainless Steel Appliance Package, including direct Vent Space Saver Microwave, multi-cycle Dishwasher, & Gas top range w/ self-cleaning oven
- **Aristokraft™** Profiled Birch Cabinets w/ Gunmetal Hardware
- Ice Maker Connection
- High Quality Formica w/ Stainless Steel Sink w/ Detached Faucet & Sprayer
- 1/3 Horsepower Energy Efficient Garbage Disposal
- Recessed Lighting Package in Kitchen

Relaxing Baths

- **Aristokraft™** Decorative Vanity Cabinets
- Durable Cultured Marble Countertops
- Elongated Toilets
- Executive Height Vanities in All Bathrooms
- Anti-Scald Shower Faucets
- 5' Extra Large Showers w/ Seat(s)
- Linen Closets (Per Plan)
- Vented Exhaust Fans in All Baths
- Decorative Towel Rods & Toilet Paper Holders
- Full-Length Vanity Mirrors

“Ask Your Sales Consultant about Custom Home Changes to Make your New Home Truly Yours!”



Exciting Exteriors

- Front Entry 2 Car Steel Reinforced Garage Door with **Liftmaster™** Door Lift w/ **MYQ Connectivity** for mobile Operation
- **Royal™** Low Maintenance Premium Vinyl Siding, providing a long-lasting, easy-to-clean exterior
- Covered Front & Rear Porches (Per Plan)
- Maintenance Free Soffits & Fascia
- **YKK™ Styleview** Low E Vinyl Windows/Insulated Glass w/ Screens
- Professionally Designed Landscape Package, including Sodded Yards (14 Pallet Max) & Beautiful Landscaped & Mulched Beds along Front of Home
- Exterior Weatherproof GFI Protected Electrical Outlets (Per Plan)
- **GAF Timberline™** High Performance Architectural Shingles
- Concrete Walkways & Driveways
- Covered Lanais w/ Ceiling Fan Kit (Per Plan)
- Grilling-Sized Patio (Per Plan)
- Hose Bibs Included (One on Each Side of Home)
- Shutters on Front Windows (Per Plan)
- Water Main Shutoff Valve located in the Garage
- Fiberglass Insulated Entry Door w/ Brushed Nickel Handle set
- Cluster Mailboxes Located throughout Community

Dependable Warranties

- Full-time Beverly Homes Customer Service Dept.
- 1-Year Coverage on Materials & Workmanship**
- **Sentricon™** Termite Colony Elimination System, the #1 choice of builders & homeowners, w/ renewable Bond
- Pre-Closing Homeowner Orientation

Energy-Efficient Designs & Quality Construction

- Insulated Low E Glass Single Hung Tilt-In Windows and Patio Doors
- 14.3 SEER2 Central Air Conditioning w/ Energy-Efficient Gas Furnace
- Space Conditioned Design & Accurate Load Calculation for HVAC Comfort
- Energy Efficient **Rinnai™** Tank-less hot water heater
- Washer & Dryer Hook-Up w/ Dryer Vent
- Fiberglass Insulation: Exterior Sidewalls R-13 or R- 19 (Per Plan)
- R-30 Ceiling Insulation that keeps you Cool in the summer & Warm in the winter
- All walls Framed 16" on Centers, providing a more structurally sound home
- 200 Amp Electrical Service w/ Copper Wiring
- Extended 10 Year Warranty Option on HVAC Equipment
- Digital Thermostat
- True Engineered Roof Truss System
- **Homeguard™** High Performance Barrier to guard against Water, Moisture, & Air Filtration
- Soil Compaction Tests before Concrete Placement
- Monolithic slab that Provides a Solid Foundation
- All Building Plans — Engineer Sealed

Home Security & Safety

- Security Deadbolt locks & Handle sets on Exterior Doors (Per Plan)
- Smoke Detectors
- Tempered Glass Windows (Per Code)
- Flood Lighting on Front & Rear of Home w/ Coach Lights on Both Sides of Garage Door
- Pre-Wired for Security System; See Sales Consultant for Available Packages & Add-Ons.

Note: Beverly Homes offers Home Customization and Upgrades. Please contact:

Jessie Capanelli | 717.808.5416



QUALITY MATTERS

What's in Your New Home?

At Beverly Homes, We Believe a Home Should Have...

EXTERIOR QUALITY

- ✓ **GAF Timberline®** Architectural Shingles
- ✓ **Royal®** Premium Vinyl Siding
- ✓ **Styleview®** Single-Hung Vinyl Windows w/ Low-E, Insulated Glass
- ✓ **Homeguard®** Engineered, Durable Housewrap w/ Water, Moisture, & Air Pressure

MECHANICAL & STRUCTURAL QUALITY

- ✓ **Rinnai®** Tankless Hot Water Heater
- ✓ **Liftmaster®** Garage Door Opener at MyQ® Connectivity
- ✓ HVAC Accurate Load Calculation w/ **Trusted Home Services**
- ✓ True Engineered Roof Truss System
- ✓ 16" Framed Interior Walls (vs. 24")

INTERIOR QUALITY

- ✓ **Aristokraft®** Premium Quality Cabinetry
- ✓ **Frigidaire®** Stainless Steel Appliances
- ✓ Fully Finished, Painted, & Trimmed Garage Walls
- ✓ Upgraded Lighting Package w/ Ceiling Fans & Recessed Lighting

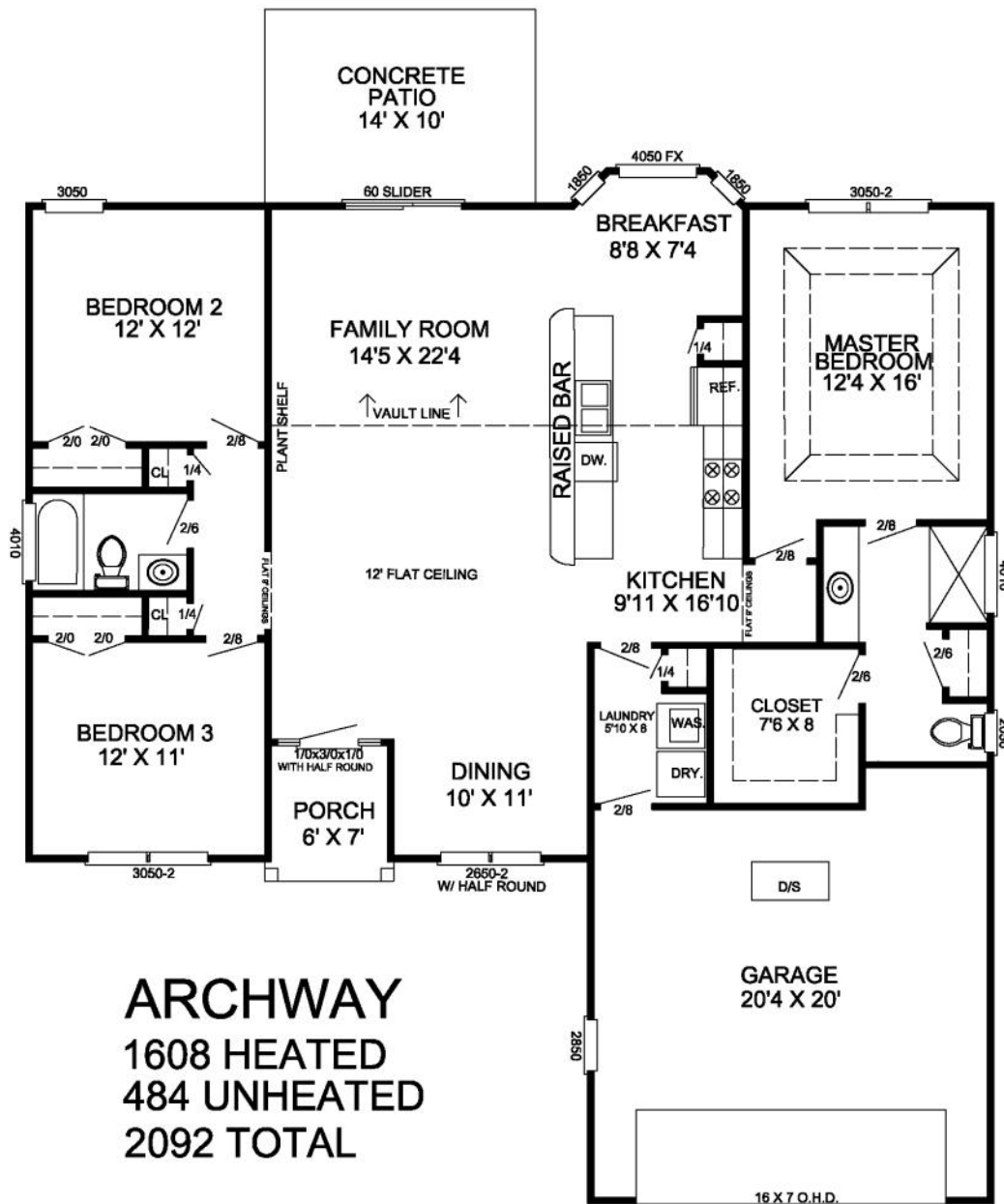
QUALITY BRAND & REPUTATION

- ✓ Home Customization Available
- ✓ Pre-Closing Homeowner Orientation
- ✓ Full Time Warranty Department
- ✓ **Sentricon®** Termite Bait System
- ✓ Security & Home Automation





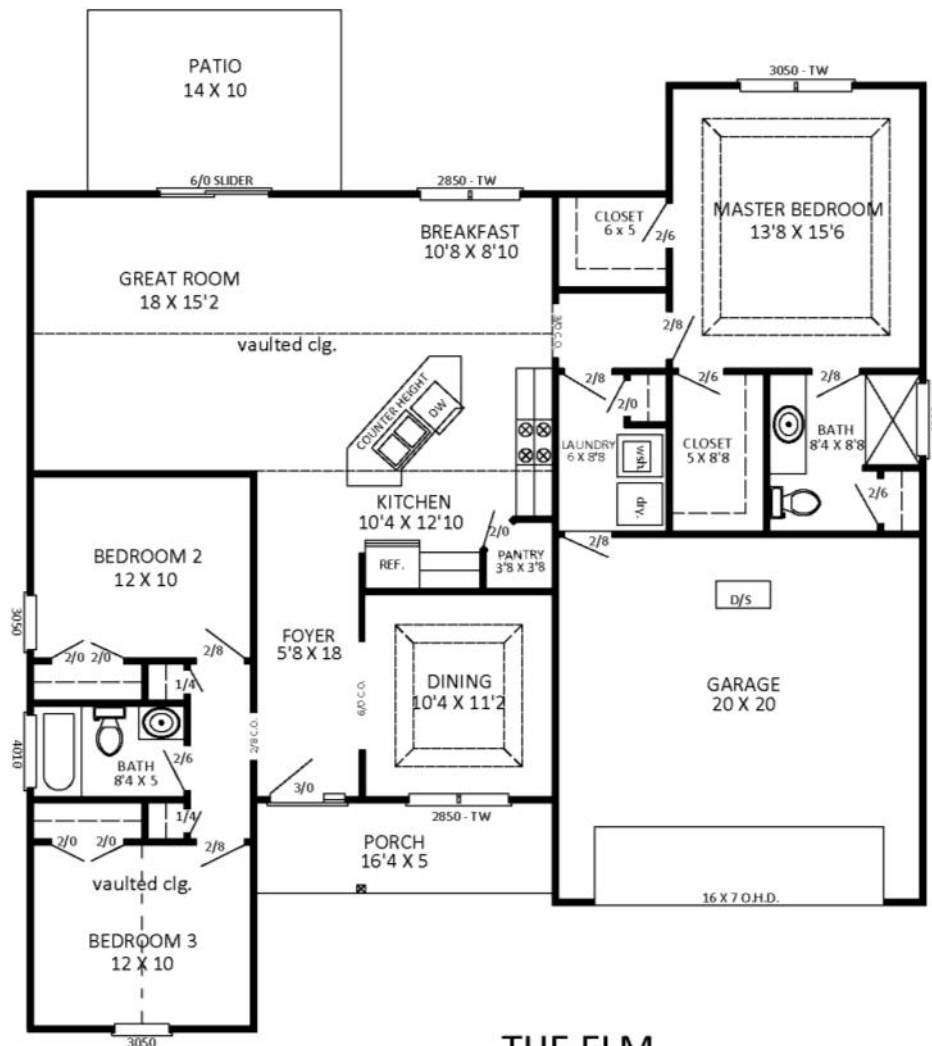
The Archway



Beverly Homes is an Equal Housing Opportunity Builder and a member of the Coastal Carolinas Association of REALTORS®. Photography, Design, and Details are for illustration purposes only and may vary. Community and home information, including Features, Pricing, Specifications, and Dimensions that are described or depicted, are conceptual and proposed and are subject to change and sale at any time without notice or obligation.



The Elm



THE ELM
1629 SQ. FT. HEATED
497 SQ. FT. UNHEATED
2126 SQ. FT. TOTAL

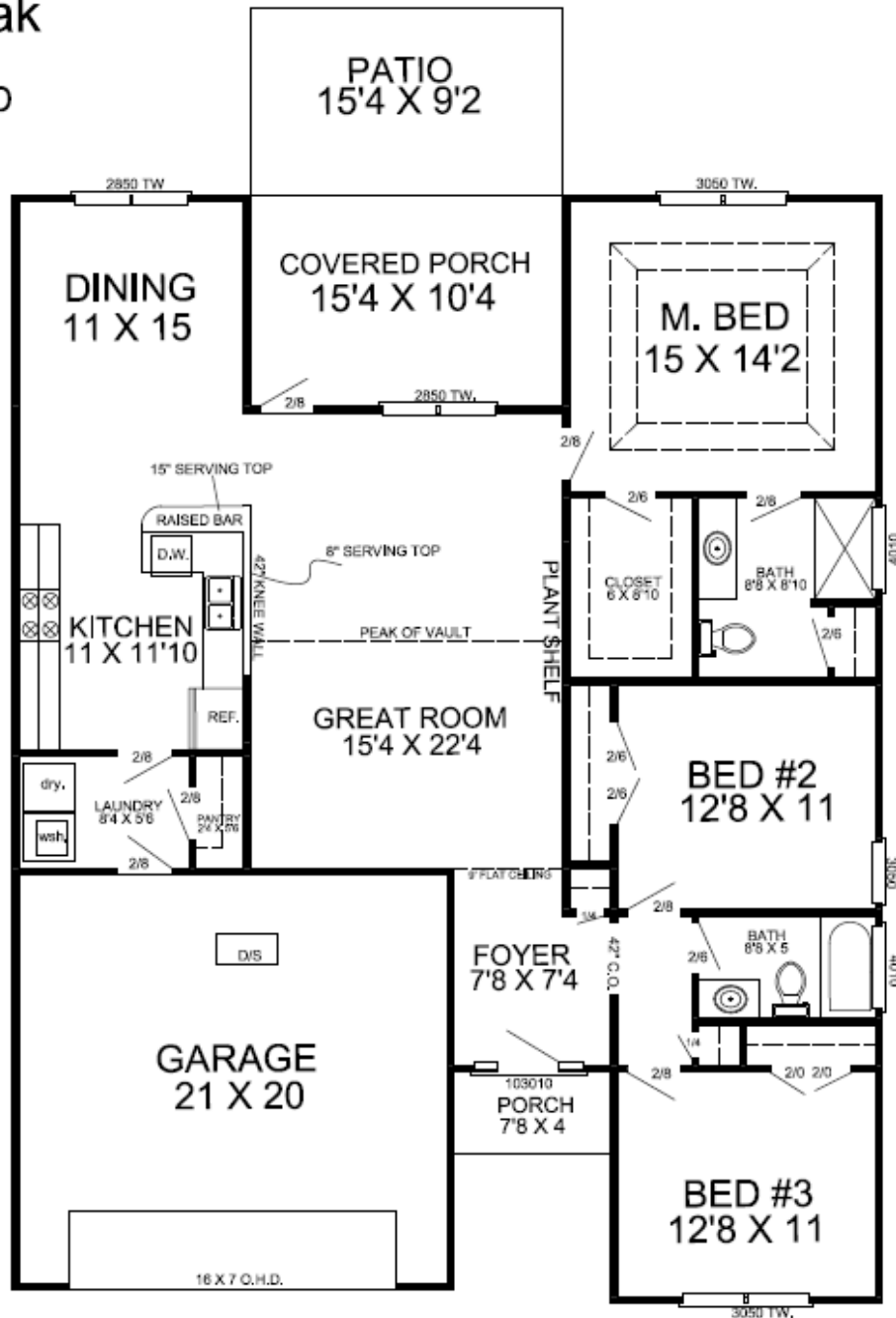


Beverly Homes is an Equal Housing Opportunity Builder and a member of the Coastal Carolinas Association of REALTORS®. Photography, Design, and Details are for illustration purposes only and may vary. Community and home information, including Features, Pricing, Specifications, and Dimensions that are described or depicted, are conceptual and proposed and are subject to change and sale at any time without notice or obligation.



The Live Oak

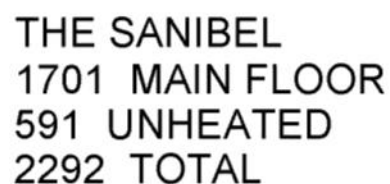
The Live Oak
 1621 HEATED
 626 UNHEATED
 2247 TOTAL



Beverly Homes is an Equal Housing Opportunity Builder and a member of the Coastal Carolinas Association of REALTORS®. Photography, Design, and Details are for illustration purposes only and may vary. Community and home information, including Features, Pricing, Specifications, and Dimensions that are described or depicted, are conceptual and proposed and are subject to change and sale at any time without notice or obligation.



The Sanibel

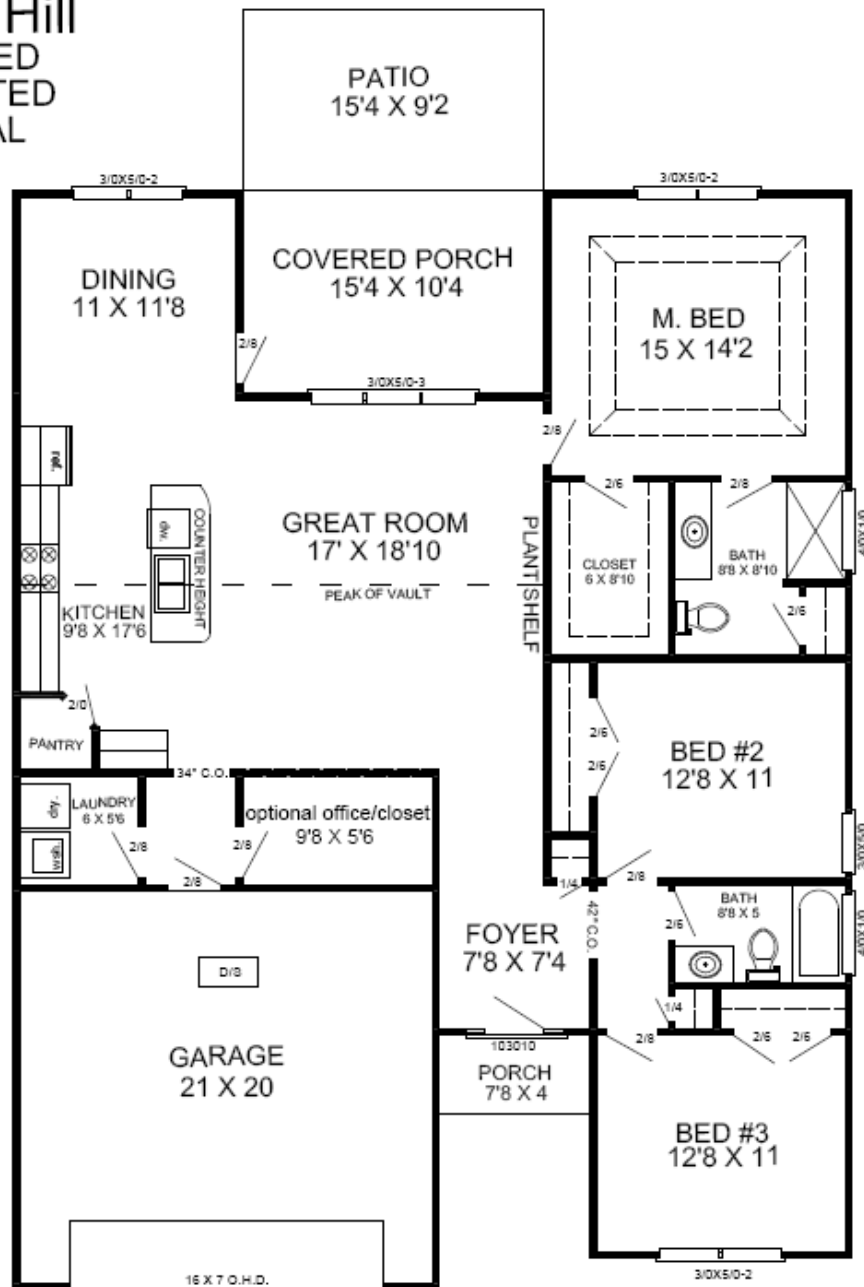


Beverly Homes is an Equal Housing Opportunity Builder and a member of the Coastal Carolinas Association of REALTORS®. Photography, Design, and Details are for illustration purposes only and may vary. Community and home information, including Features, Pricing, Specifications, and Dimensions that are described or depicted, are conceptual and proposed and are subject to change and sale at any time without notice or obligation.



The Parkhill

The Park Hill
 1671 HEATED
 627 UNHEATED
 2298 TOTAL



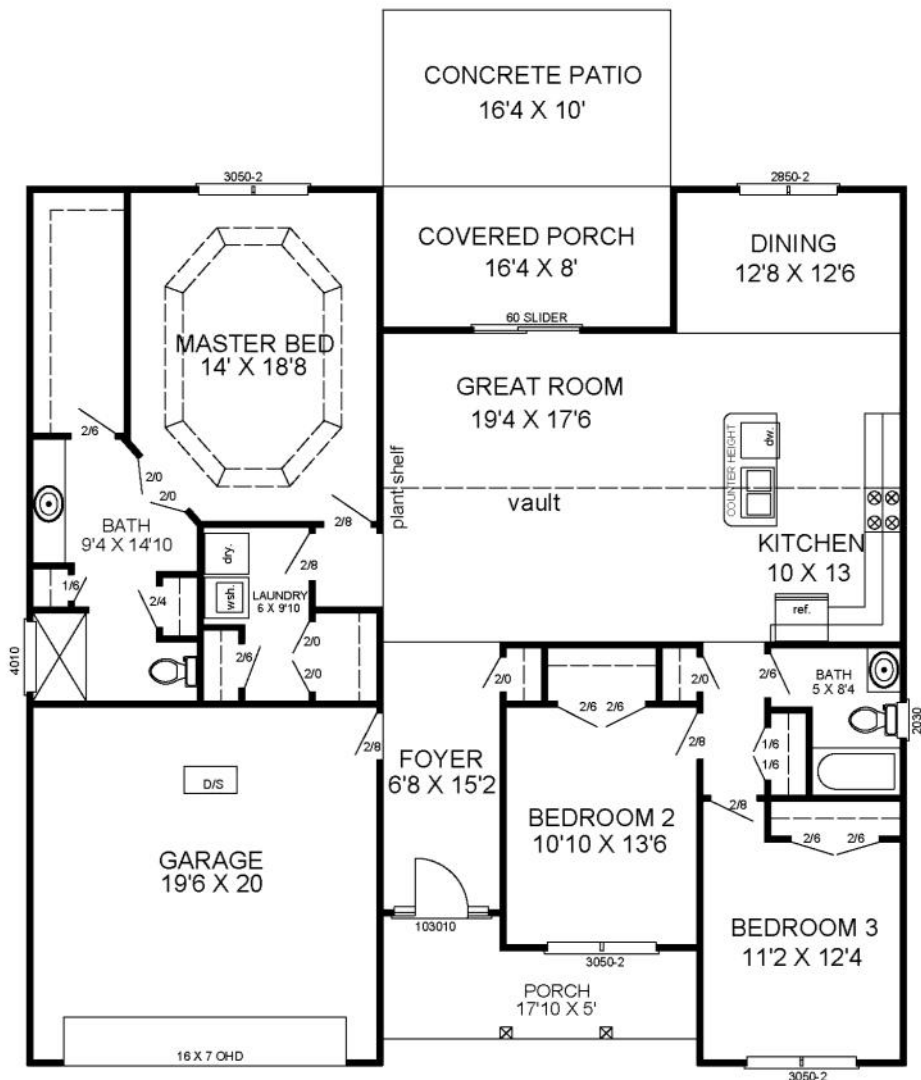
Beverly Homes is an Equal Housing Opportunity Builder and a member of the Coastal Carolinas Association of REALTORS®. Photography, Design, and Details are for illustration purposes only and may vary. Community and home information, including Features, Pricing, Specifications, and Dimensions that are described or depicted, are conceptual and proposed and are subject to change and sale at any time without notice or obligation.



Beverly Homes is an Equal Housing Opportunity Builder and a member of the Coastal Carolinas Association of REALTORS®. Photography, Design, and Details are for illustration purposes only and may vary. Community and home information, including Features, Pricing, Specifications, and Dimensions that are described or depicted, are conceptual and proposed and are subject to change and sale at any time without notice or obligation.



The Sullivan



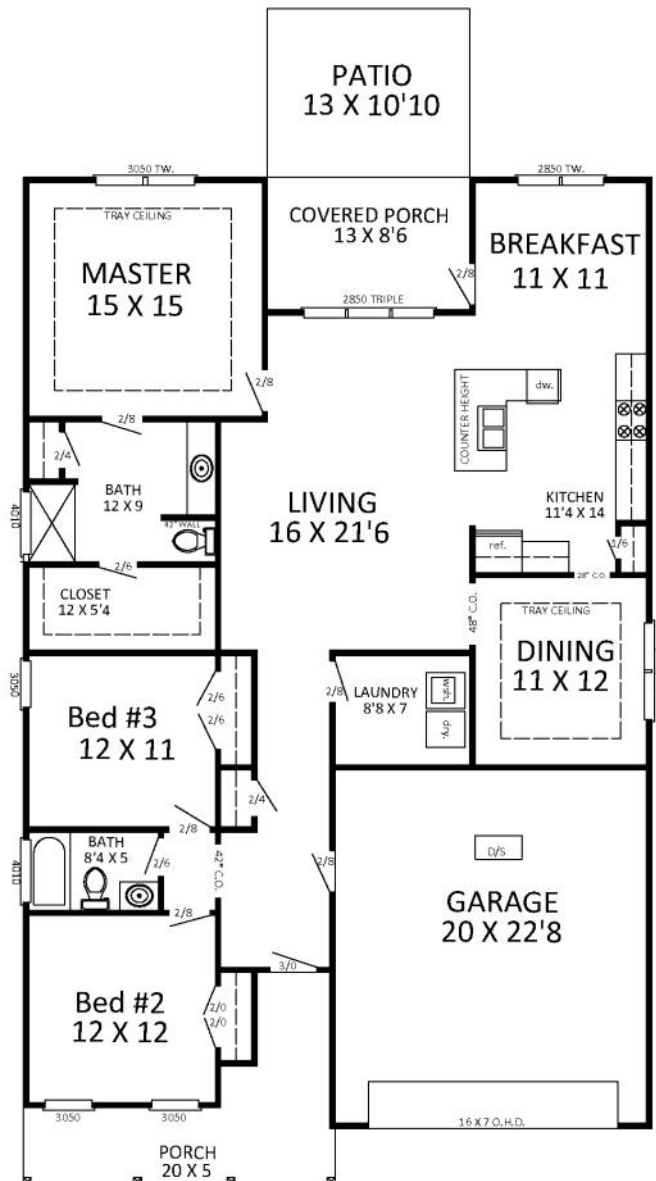
THE SULLIVAN
1817 MAIN FLOOR
640 UNHEATED
2457 TOTAL



Beverly Homes is an Equal Housing Opportunity Builder and a member of the Coastal Carolinas Association of REALTORS®. Photography, Design, and Details are for illustration purposes only and may vary. Community and home information, including Features, Pricing, Specifications, and Dimensions that are described or depicted, are conceptual and proposed and are subject to change and sale at any time without notice or obligation.



The Pinckney



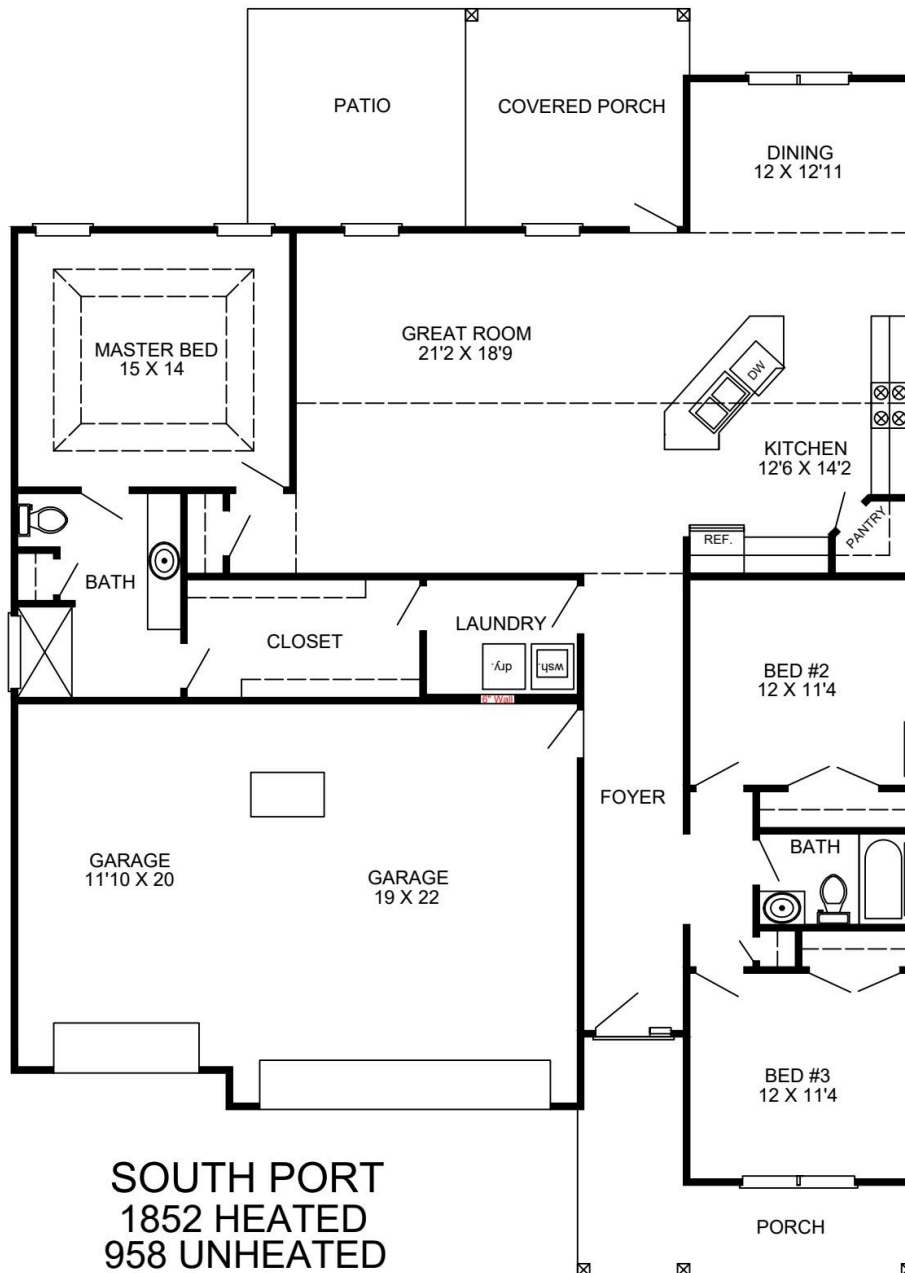
The Pinckney
1806 Htd
728 Uhd
2534 Total



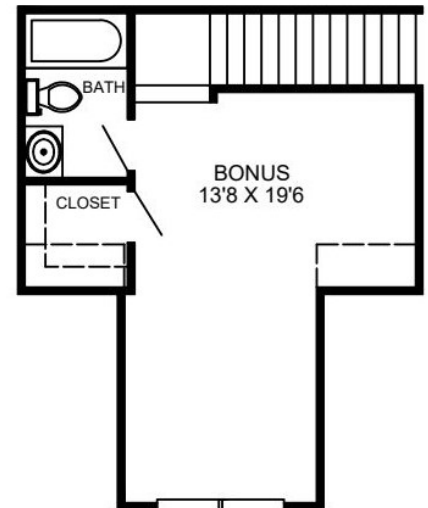
Beverly Homes is an Equal Housing Opportunity Builder and a member of the Coastal Carolinas Association of REALTORS®. Photography, Design, and Details are for illustration purposes only and may vary. Community and home information, including Features, Pricing, Specifications, and Dimensions that are described or depicted, are conceptual and proposed and are subject to change and sale at any time without notice or obligation.



The Southport



SOUTH PORT
1852 HEATED
958 UNHEATED
2810 TOTAL



SOUTH PORT
1906 HEATED
337 BONUS
939 UNHEATED
3182 TOTAL

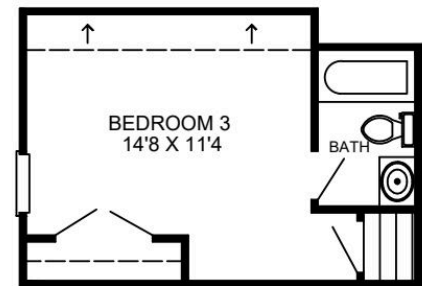
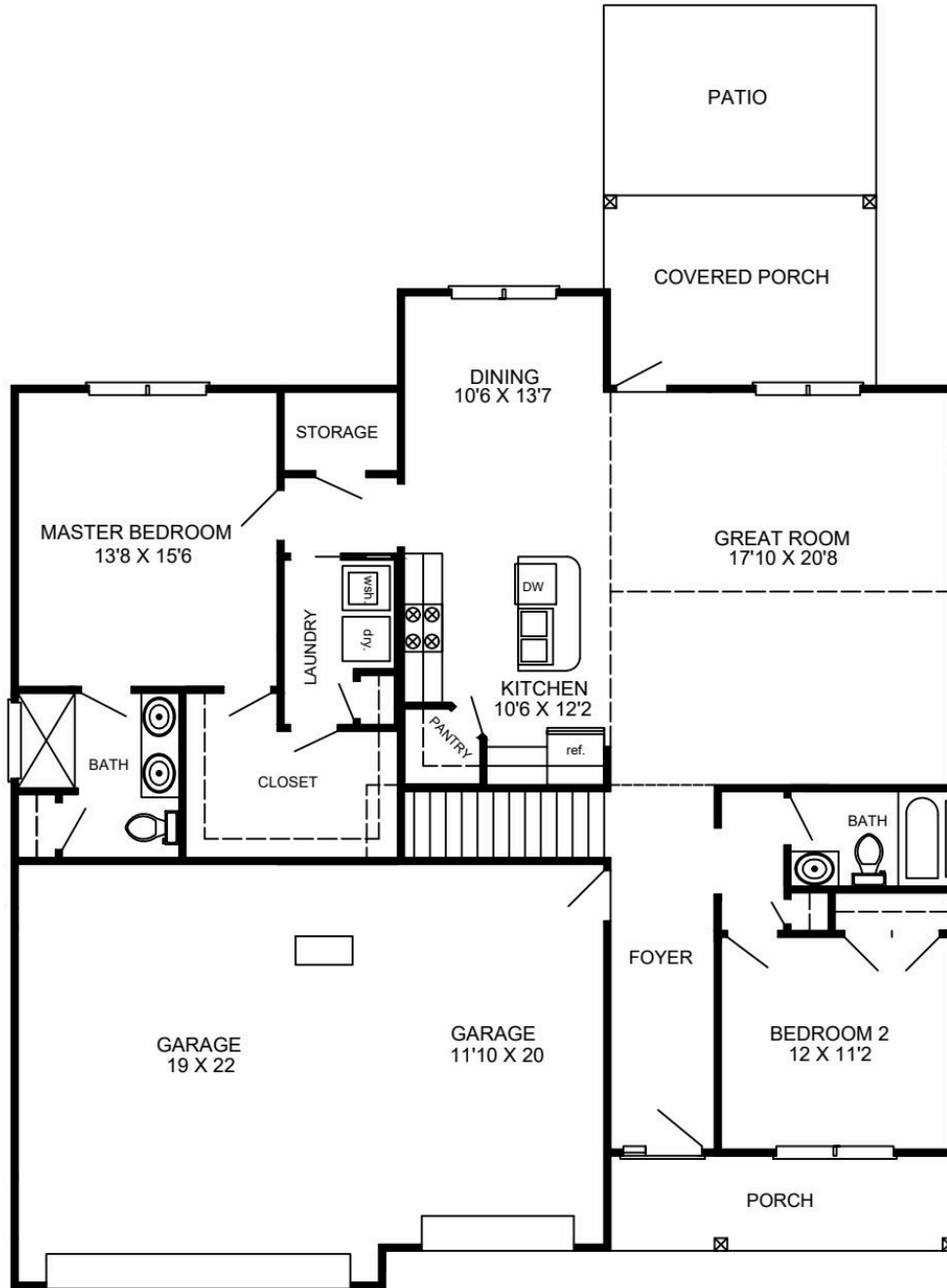




BUXTON A



The Buxton

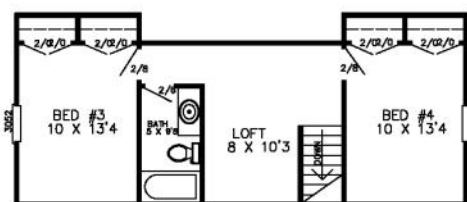
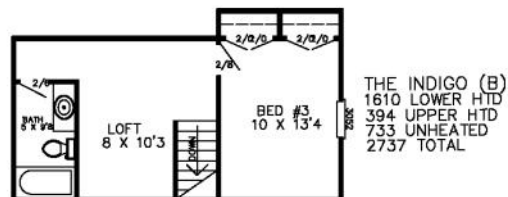
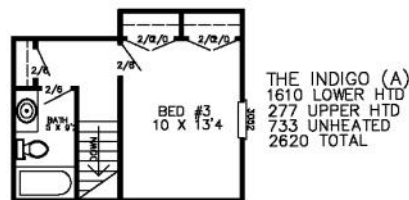
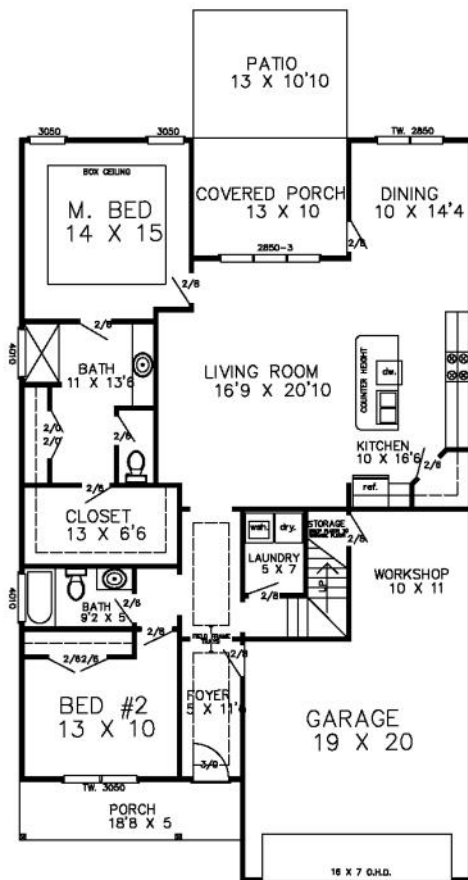


The Buxton
1590 HEATED
286 UPSTAIRS
908 UNHEATED
2784 TOTAL





The Indigo



CHESTNUT
RIDGE



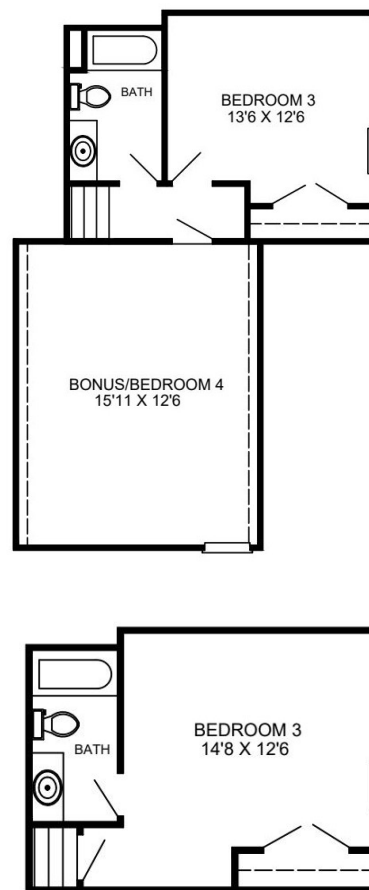
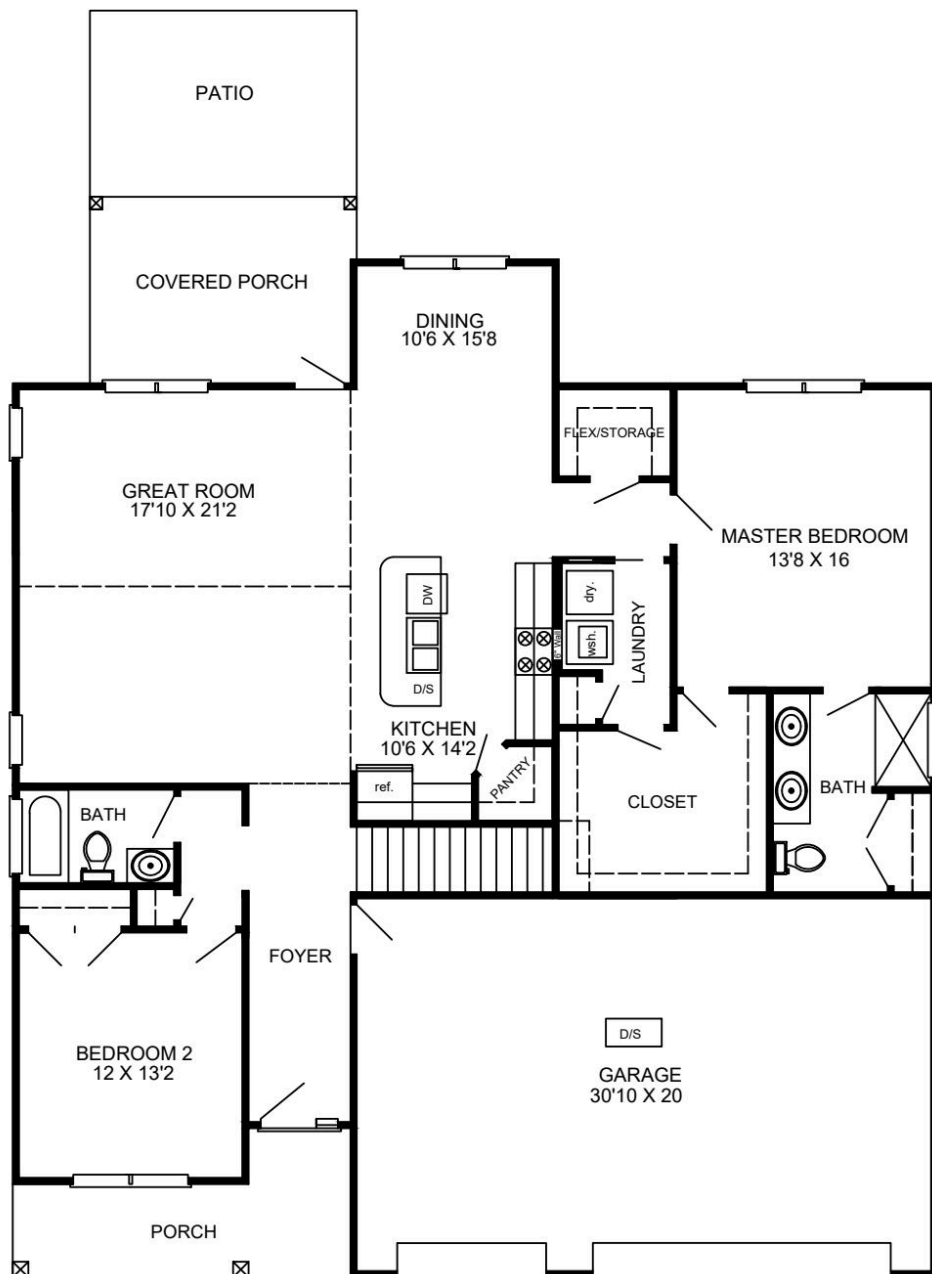
EQUAL HOUSING
OPPORTUNITY

Beverly Homes is an Equal Housing Opportunity Builder and a member of the Coastal Carolinas Association of REALTORS®. Photography, Design, and Details are for illustration purposes only and may vary. Community and home information, including Features, Pricing, Specifications, and Dimensions that are described or depicted, are conceptual and proposed and are subject to change and sale at any time without notice or obligation.



The Corolla

COROLLA
1715 HEATED
652 UPSTAIRS
885 UNHEATED
3252 TOTAL



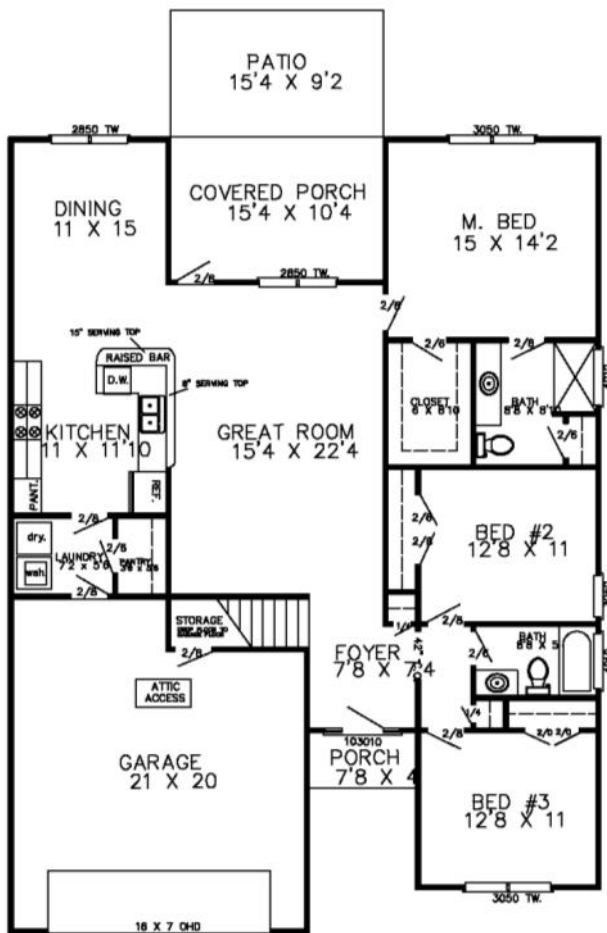
COROLLA
1714 HEATED
315 UPSTAIRS
885 UNHEATED
2904 TOTAL



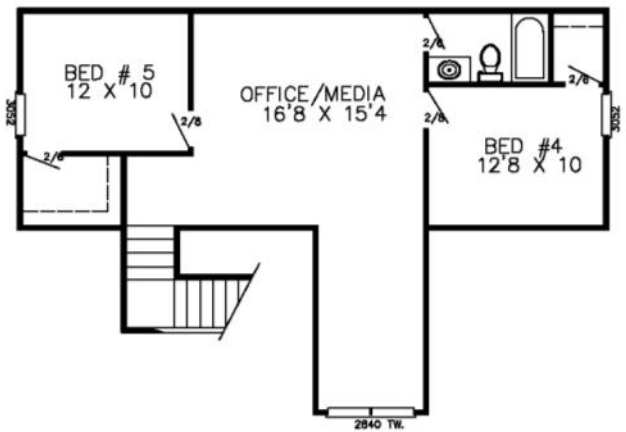


Live Oak II

Main Floor



2nd Level



LIVE OAK II
1659 MAIN FLOOR
794 SECOND LEVEL
671 UN HEATED
3124 TOTAL

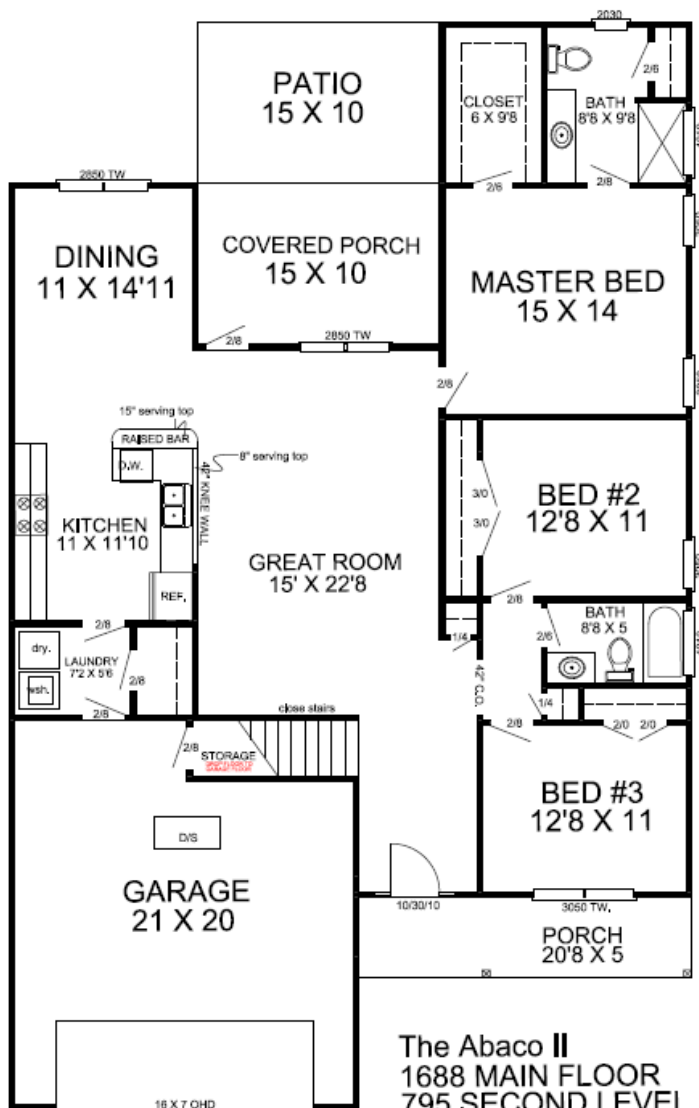


Beverly Homes is an Equal Housing Opportunity Builder and a member of the Coastal Carolinas Association of REALTORS®. Photography, Design, and Details are for illustration purposes only and may vary. Community and home information, including Features, Pricing, Specifications, and Dimensions that are described or depicted, are conceptual and proposed and are subject to change and sale at any time without notice or obligation.

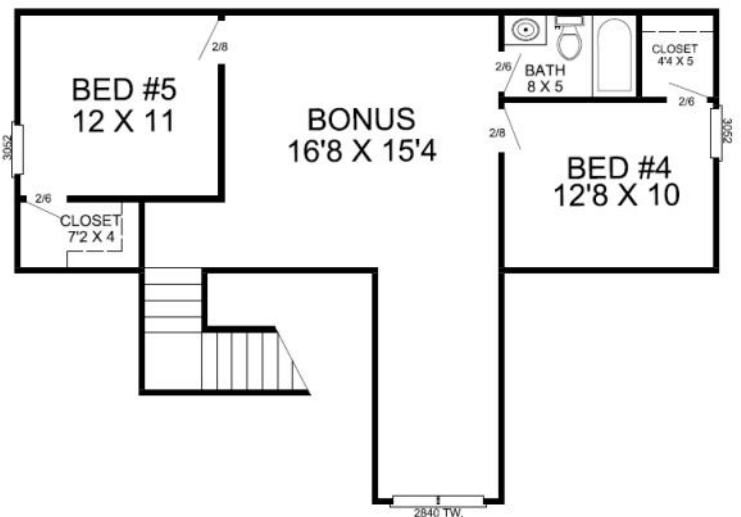


The Abaco II

Main Floor



2nd Level



The Abaco II
1688 MAIN FLOOR
795 SECOND LEVEL
734 UN HEATED
3217 TOTAL

