



APRICOT ESTATES

TRUMARK**HOMES**

APRICOT ESTATES

RESIDENCE 1

4 Bedrooms, 3.5 Baths, Loft, NextGen, 2-Car plus 1-Car Garage
Approx. 3,019 Sq. Ft.



Residence 1A - Farmhouse



Residence 1B - Craftsman




Residence 1C - Prairie

PRELIMINARY

Preliminary and subject to change.

925.281.3227 | Sales@TrumarkHomes.com | 1613 Strathaven Place, Brentwood, CA 94513 | VIP-Apricot-Estates.com

TRUMARKHOMES

All information is for reference only. Prices, taxes and specifications subject to change and should be verified by all potential homebuyers. This is not an offer to sell but is intended for information only. The developer reserves the right to make modifications in materials, specifications, plans, pricing, various fees, designs, scheduling and delivery of homes without prior notice. All dimensions and square footages are approximate. Plan and dimensions may contain minor variations from floor to floor. CA DRE license no. 01877720. 

PRELIMINARY

APRICOT ESTATES

RESIDENCE 2R

5 Bedrooms, 4.5 Baths, Loft, NextGen, 4-Car Garage
Approx. 3,803 Sq. Ft.



Residence 2AR - Farmhouse



Residence 2BR - Craftsman




Residence 2CR - Prairie

PRELIMINARY

Preliminary and subject to change.

925.281.3227 | Sales@TrumarkHomes.com | 1613 Strathaven Place, Brentwood, CA 94513 | VIP-Apricot-Estates.com

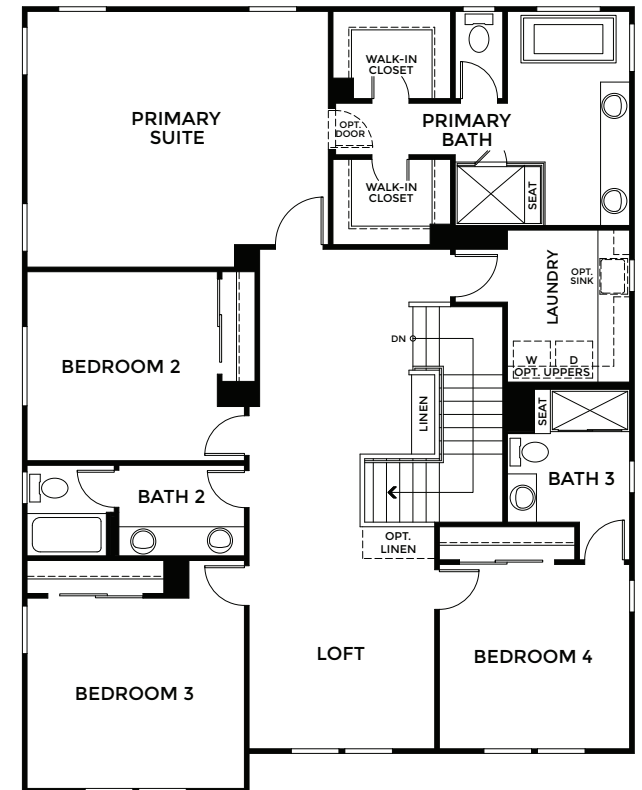
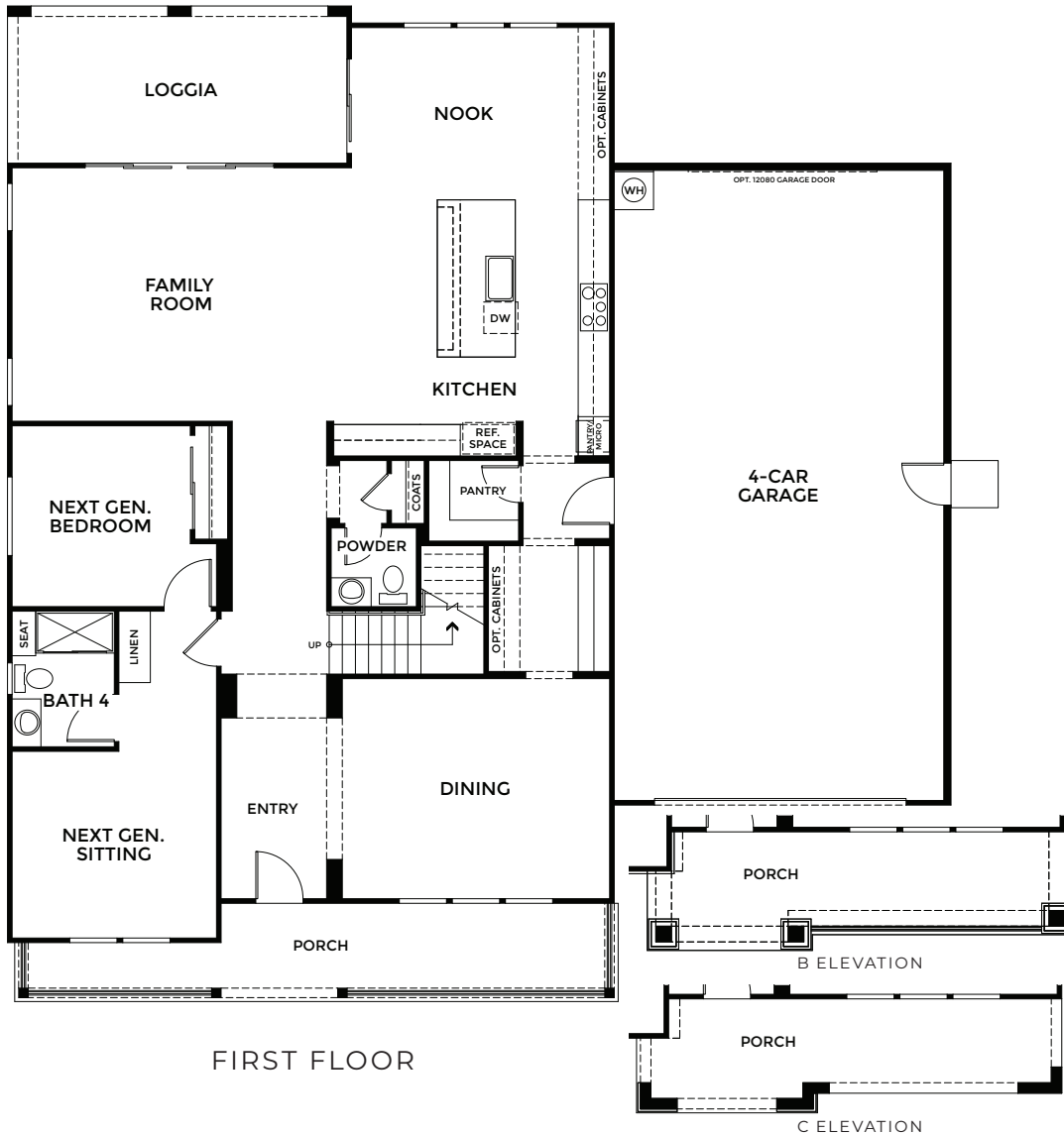
TRUMARKHOMES

All information is for reference only. Prices, taxes and specifications subject to change and should be verified by all potential homebuyers. This is not an offer to sell but is intended for information only. The developer reserves the right to make modifications in materials, specifications, plans, pricing, various fees, designs, scheduling and delivery of homes without prior notice. All dimensions and square footages are approximate. Plan and dimensions may contain minor variations from floor to floor. CA DRE license no. 01877720. 

APRICOT ESTATES

RESIDENCE 2R

5 Bedrooms, 4.5 Baths, Loft, NextGen, 4-Car Garage
Approx. 3,803 Sq. Ft.




SECOND FLOOR

Preliminary and subject to change.

925.281.3227 | Sales@TrumarkHomes.com | 1613 Strathaven Place, Brentwood, CA 94513 | VIP-Apricot-Estates.com

TRUMARK HOMES

All information is for reference only. Prices, taxes and specifications subject to change and should be verified by all potential homebuyers. This is not an offer to sell but is intended for information only. The developer reserves the right to make modifications in materials, specifications, plans, pricing, various fees, designs, scheduling and delivery of homes without prior notice. All dimensions and square footages are approximate. Plan and dimensions may contain minor variations from floor to floor. CA DRE license no. 01877720. 

PRELIMINARY

APRICOT ESTATES

RESIDENCE 3

5 Bedrooms, 4.5 Baths, Flex Room, Bonus Room, 3-Car Tandem Garage
Approx. 4,397 Sq. Ft.



Residence 3A - Farmhouse



Residence 3B - Craftsman




Residence 3C - Prairie

Preliminary and subject to change.

925.281.3227 | Sales@TrumarkHomes.com | 1613 Strathaven Place, Brentwood, CA 94513 | VIP-Apricot-Estates.com

TRUMARKHOMES

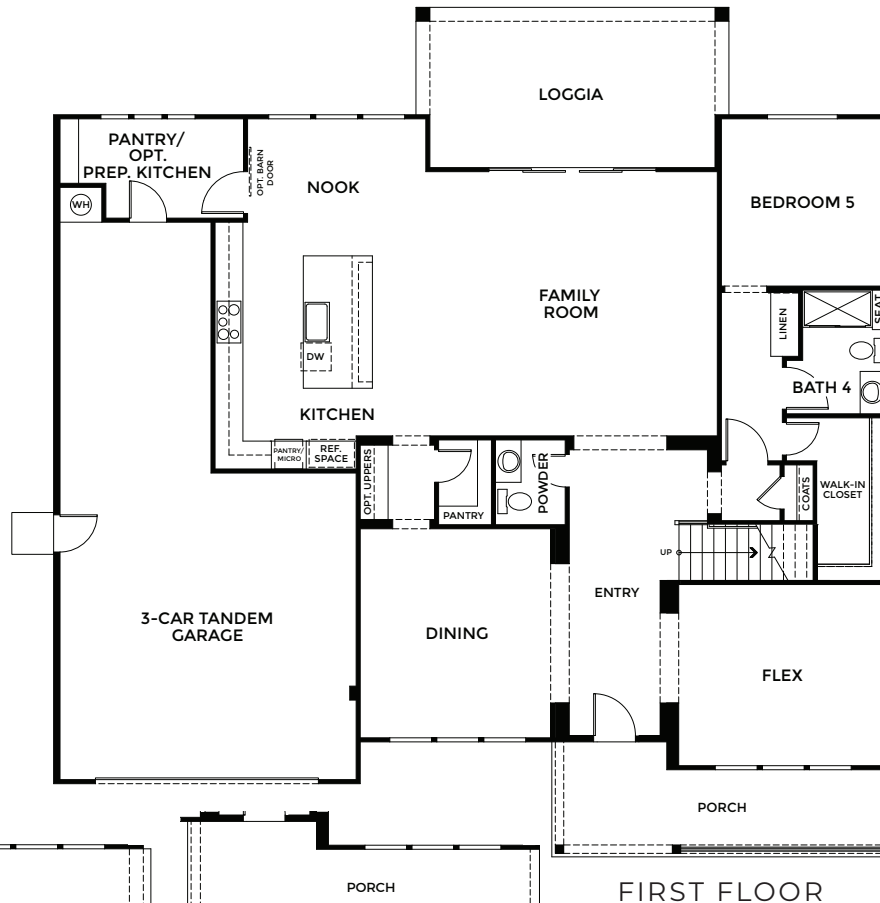
All information is for reference only. Prices, taxes and specifications subject to change and should be verified by all potential homebuyers. This is not an offer to sell but is intended for information only. The developer reserves the right to make modifications in materials, specifications, plans, pricing, various fees, designs, scheduling and delivery of homes without prior notice. All dimensions and square footages are approximate. Plan and dimensions may contain minor variations from floor to floor. CA DRE license no. 01877720. 

PRELIMINARY

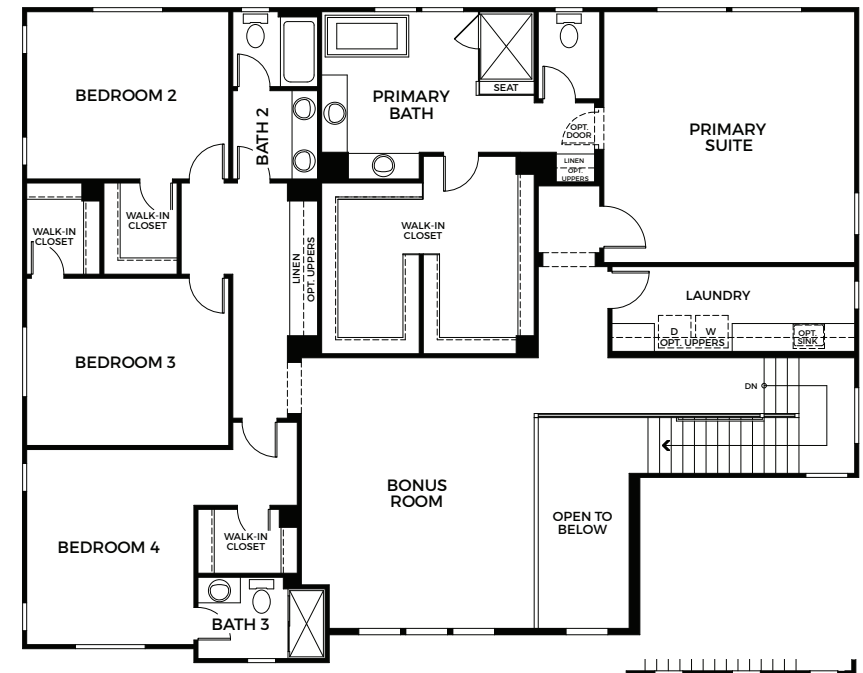
APRICOT ESTATES

RESIDENCE 3

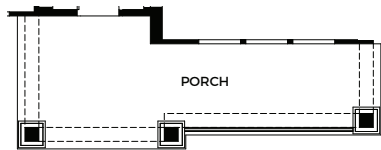
5 Bedrooms, 4.5 Baths, Flex Room, Bonus Room, 3-Car Tandem Garage
Approx. 4,397 Sq. Ft.



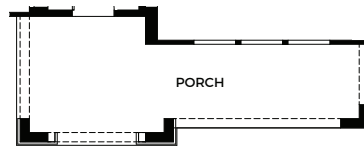
FIRST FLOOR



SECOND FLOOR



B ELEVATION



C ELEVATION




B ELEVATION

Preliminary and subject to change.

925.281.3227 | Sales@TrumarkHomes.com | 1613 Strathaven Place, Brentwood, CA 94513 | VIP-Apricot-Estates.com

TRUMARK HOMES

All information is for reference only. Prices, taxes and specifications subject to change and should be verified by all potential homebuyers. This is not an offer to sell but is intended for information only. The developer reserves the right to make modifications in materials, specifications, plans, pricing, various fees, designs, scheduling and delivery of homes without prior notice. All dimensions and square footages are approximate. Plan and dimensions may contain minor variations from floor to floor. CA DRE license no. 01877720. 

PRELIMINARY

APRICOT ESTATES

SITE MAP



PRELIMINARY

Preliminary and subject to change.

925.281.3227 | Sales@TrumarkHomes.com | 1613 Strathaven Place, Brentwood, CA 94513 | VIP-Apricot-Estates.com

TRUMARK HOMES

All information is for reference only. Prices, taxes and specifications subject to change and should be verified by all potential homebuyers. This is not an offer to sell but is intended for information only. The developer reserves the right to make modifications in materials, specifications, plans, pricing, various fees, designs, scheduling and delivery of homes without prior notice. All dimensions and square footages are approximate. Plan and dimensions may contain minor variations from floor to floor. CA DRE license no. 01877720. 